



GRESHAM COLLEGE

Scratching the Surface? Looking from Space at Human Impact on Earth

Carolyn Roberts

Frank Jackson Professor of Environment
Gresham College London,

and

Water and Environment consultant



'The Blue Marble'

The United Nations Conference on the Human Environment, having met at Stockholm from 5 to 16 June 1972, having considered the need for a common outlook and for common principles to inspire and guide the peoples of the world in the preservation and enhancement of the environment, proclaims that ...Man is both creature and moulder of his environment, which gives him physical sustenance and affords him the opportunity for intellectual, moral, social and spiritual growth.....man has acquired the power to transform his environment in countless ways and on an unprecedented scale.

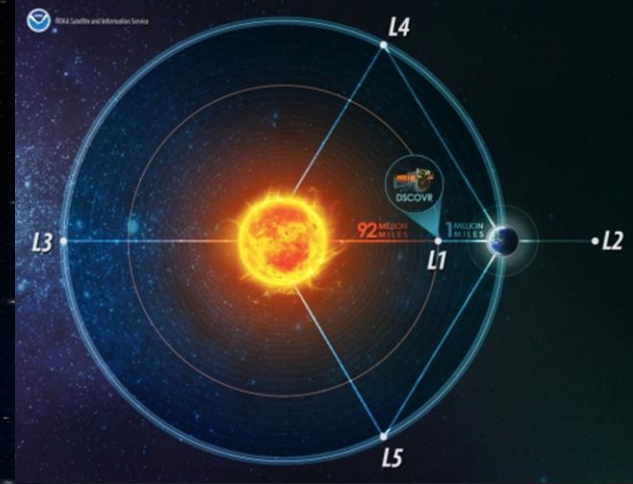


NASA, December 1972, Apollo 17 Mission

‘The Blue
Marble: The
Next
Generation’



*‘We are all astronauts
on a little spaceship
called Earth’
Buckminster Fuller
(2008)*

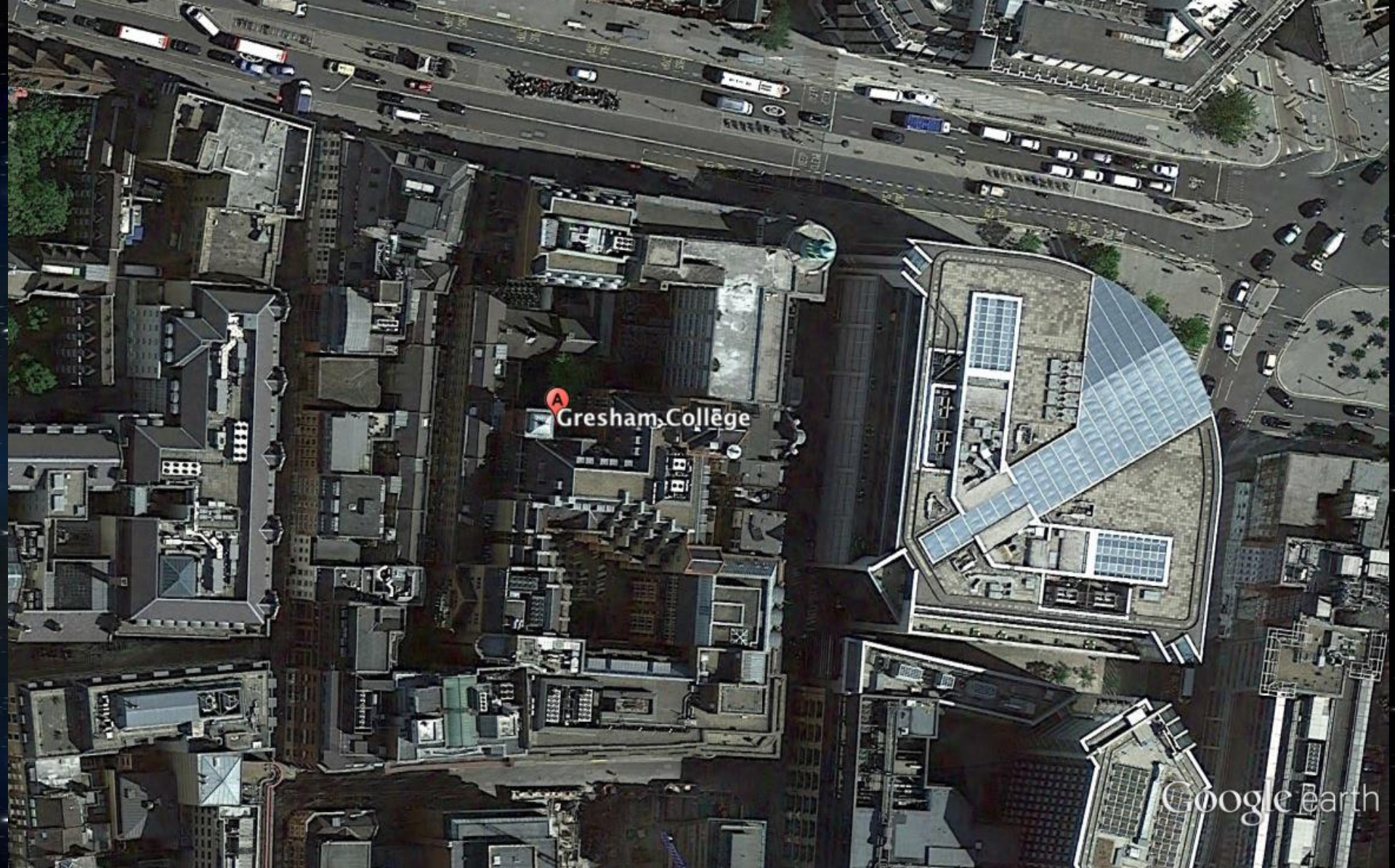


NASA released the first image of Earth taken by the EPIC camera on the DSCOVR satellite, in 2016. It has now captured a full year of our planet, at two hourly intervals, from about one million miles away at Lagrange Point 1

A coming together of...

- The operationalisation of Global Positioning Satellites (GPS) for military and civilian uses in 1991, now with 24 military satellites supporting everything from missiles to your mobile phone
- The distribution of data and imagery on the WWW in 1992
- The huge growth in personal computing
- The use of Geographic Information Systems for the management of information
- The privatisation of high resolution satellites in the later 1990s
- The enormous growth in data storage capability, and the decrease in costs, internationally
- The appearance of Google Earth in 2005






Google Earth, apparently 2016, Gresham College



Cambridge Colleges and town centre on Google Earth, 2016

A satellite-style 3D map of the island of Hawaii, showing the rugged terrain of Mauna Loa. The mountain is the central focus, with its dark, rocky slopes and a prominent crater rim. The surrounding island is covered in green vegetation, and the deep blue ocean is visible around the coastlines. A red pin is placed on the summit of Mauna Loa, with the text 'Mauna Loa' in white next to it.

Mauna Loa

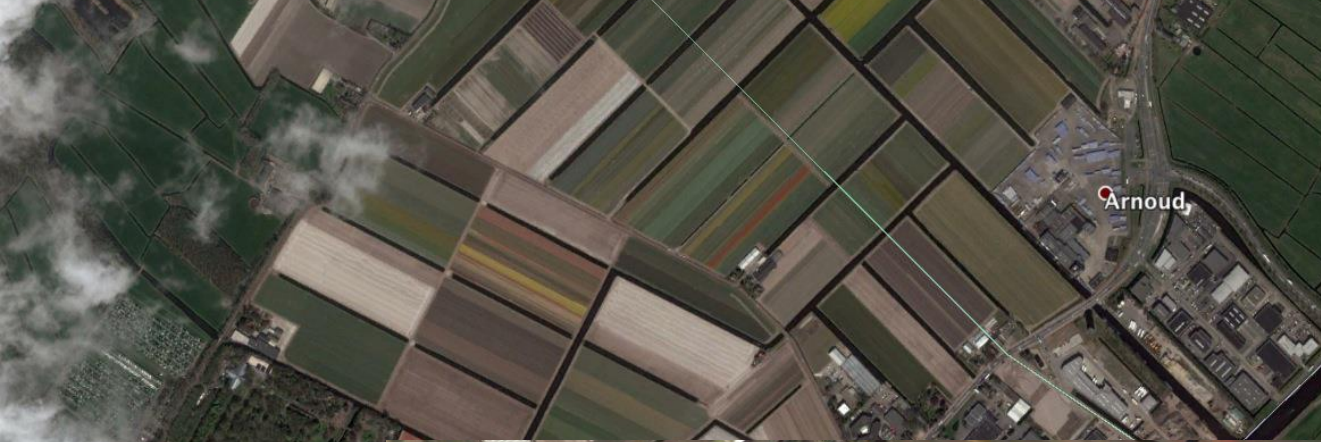
Data SIO, NOAA, U.S. Navy, NGA, GEBCO
Image Landsat
Data LDEO-Columbia, NSF, NOAA
Data MBARI

Google Earth



Google Earth, historic image, December

Google Earth
zooming in,
near
Amsterdam





Fields of tulips near Lisse, Amsterdam, Netherlands.
www.yannarathusbertrand.org

Range of satellites doing different things



Artist's rendition. Image credit Korea Aerospace Research Institute



KOMPSAT-2 Korea Multi-Purpose Satellite-2's main objectives are to provide surveillance capability for large-scale disasters by acquiring high-resolution imagery (1m resolution) for GIS applications

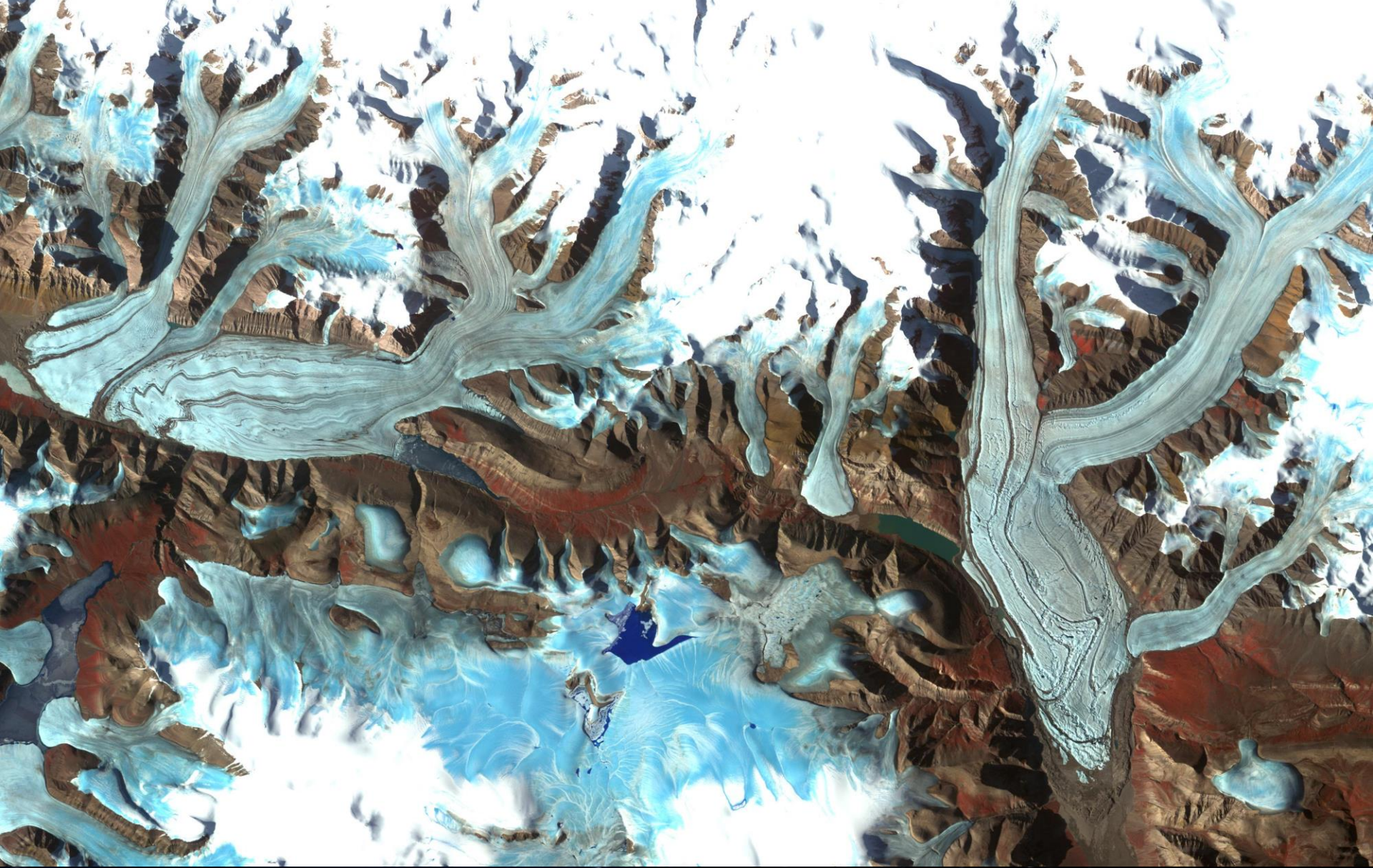


Railway Station

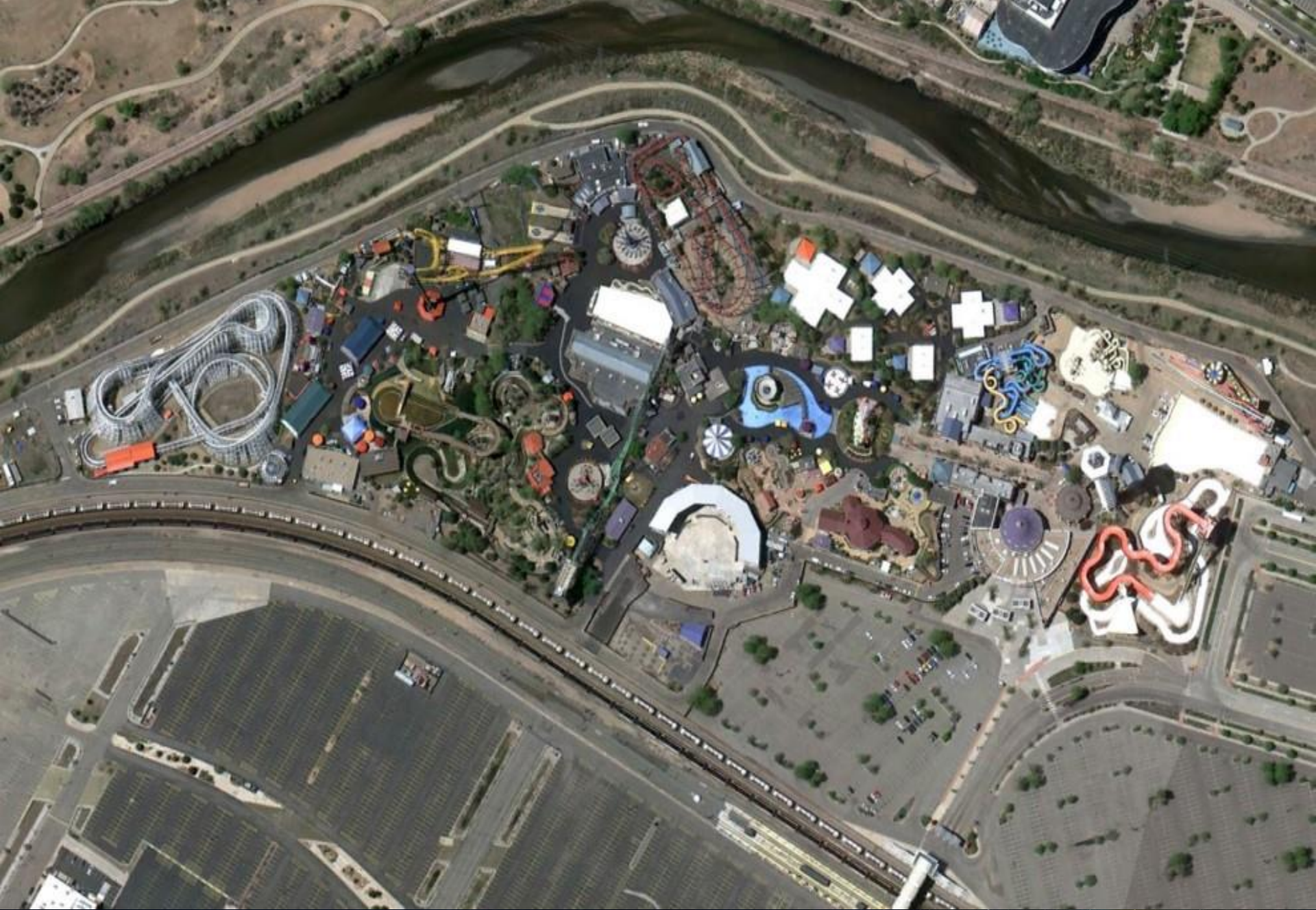
© 2016 Google
Image © 2016 CNES / Astrium

Google Earth

Alleged Prison Camp 22, Hoeryng County, North Korea



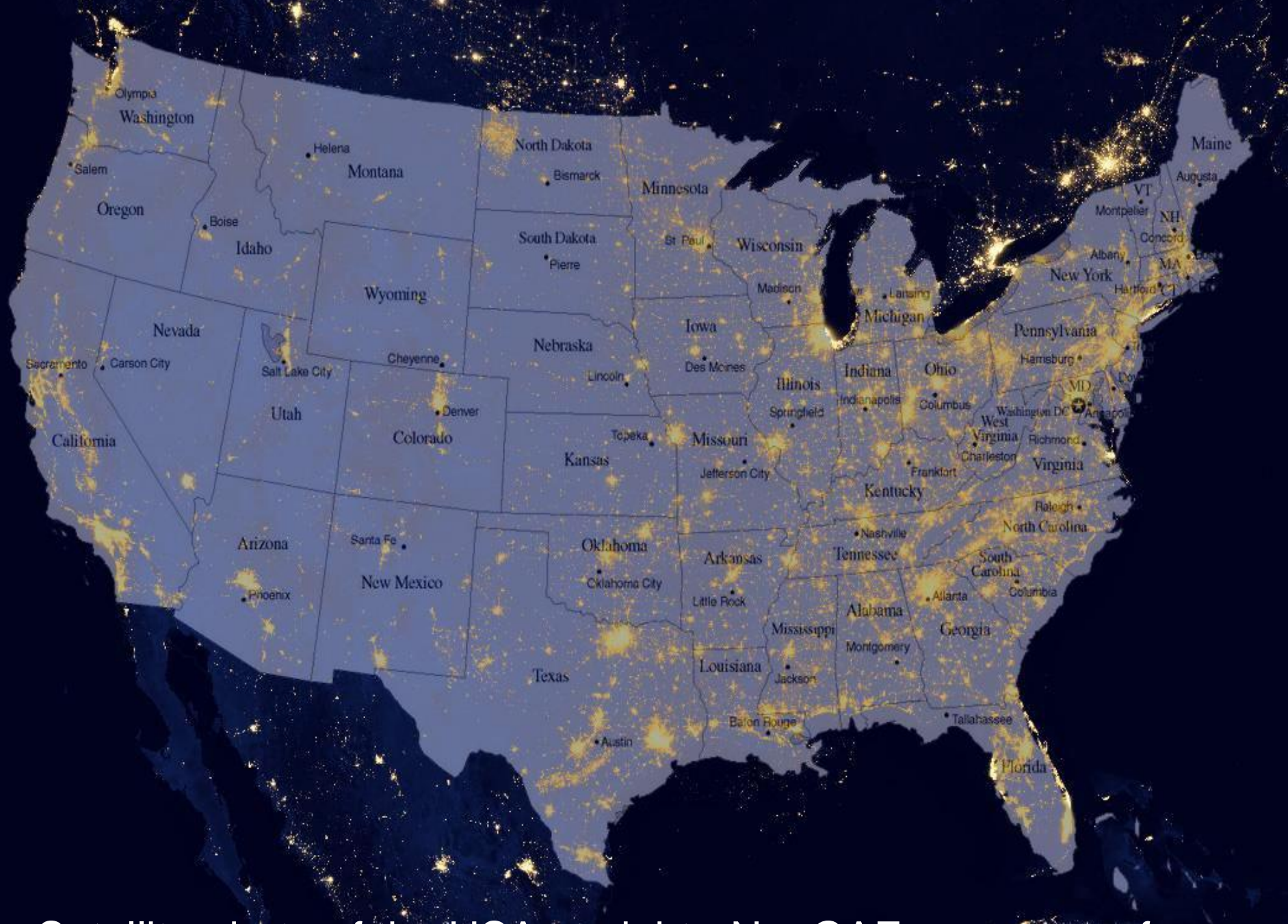
Chapman Glacier, Antarctica. www.satimagingcorp.com



Eitch Gardens Theme Park , Denver, Colorado, USA



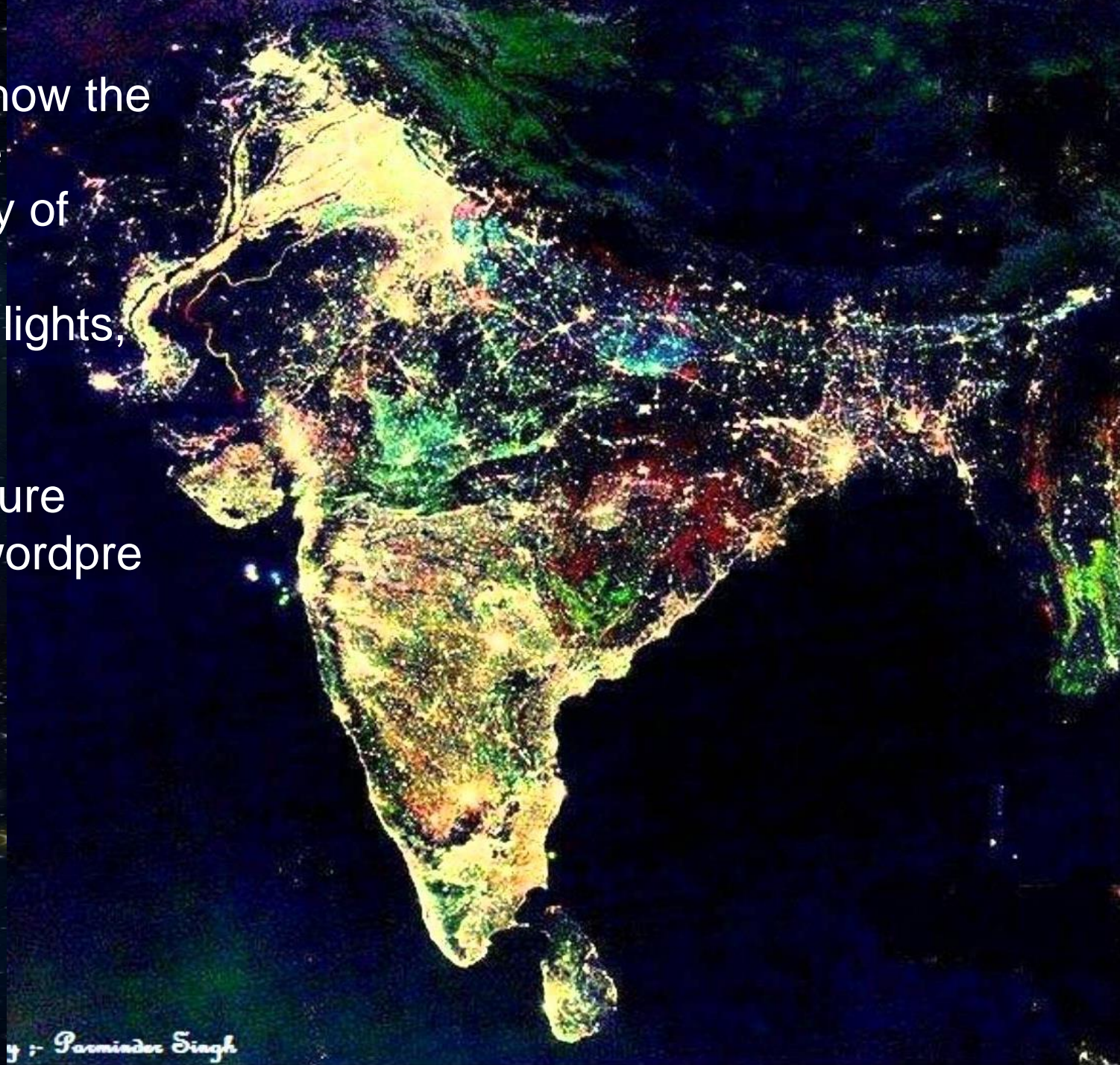
KOMPSAT-2 image of the Zaatari Refugee Camp, Jordan, acquired on June 5, 2013
(image credit: KARI, European Space Agency)



Satellite photo of the USA at night - NeoGAF www.neogaf.com

NASA image
compiled to show the
evening of the
festival holiday of
Diwali, the
celebration of lights,
in India.

The Meta Picture
bigfunnysite.wordpress.com





What's this?



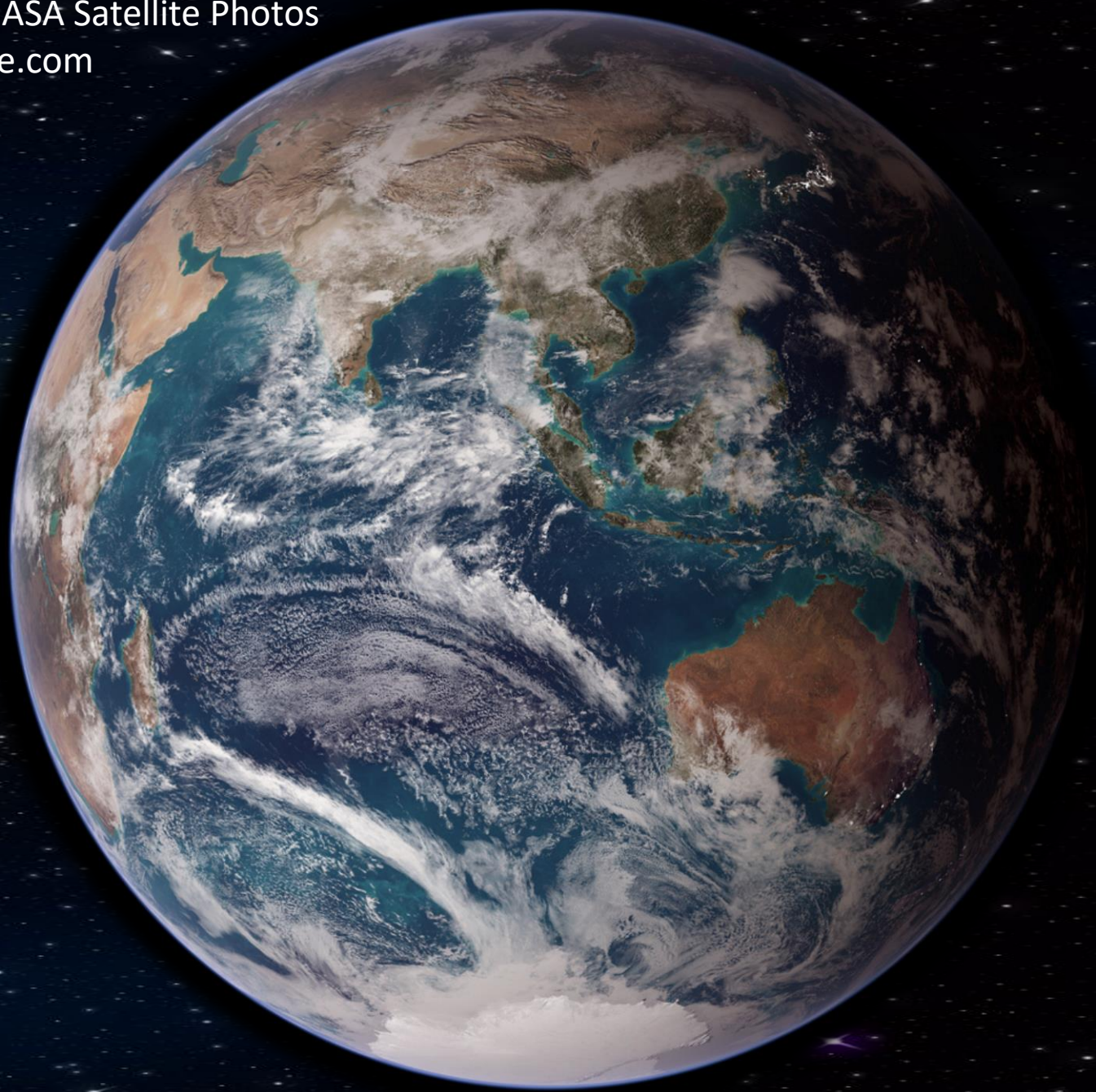


Giant Italian Rabbit, produced by group of artists near Artesina, Italy. SPOT image



Super Crab at Whitstable, Kent?

Satellite Radar Online + NASA Satellite Photos
weather.thefuntimesguide.com



Elemental icons – the four elements of nature and history



A mixture of science, philosophy and mysticism.....



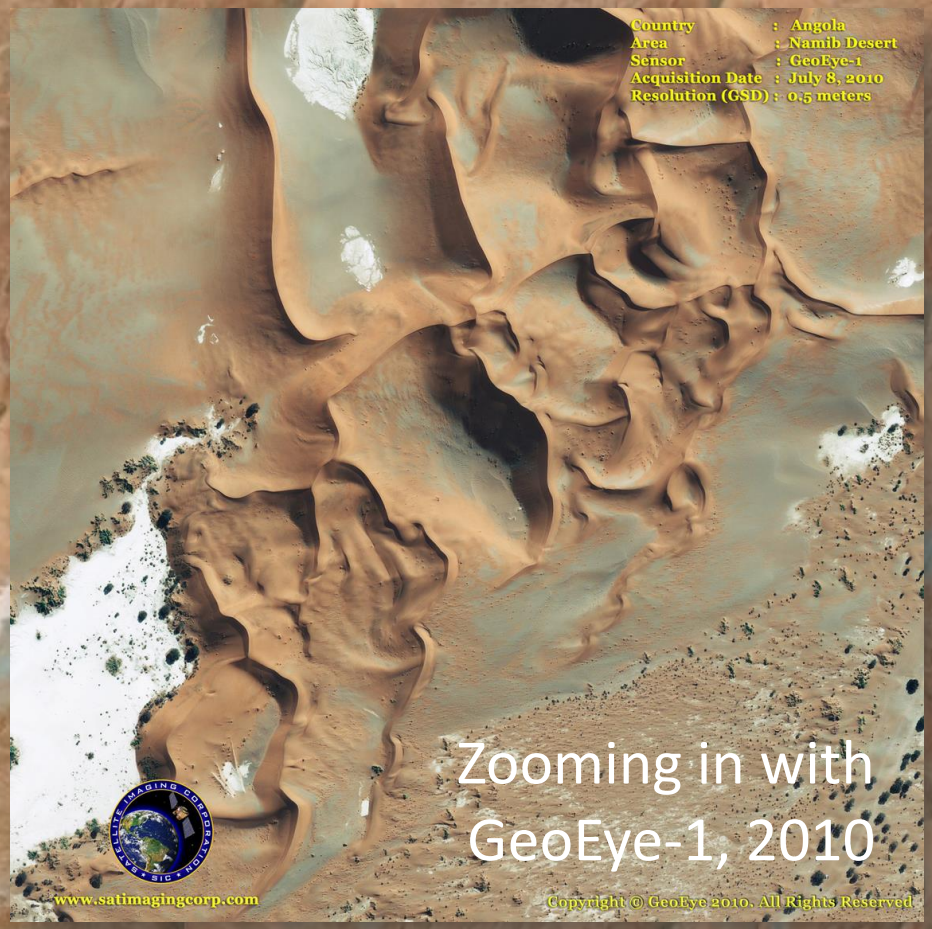
A satellite view of the Vatnajökull glacier in Iceland. The glacier is a large, white, irregularly shaped mass in the upper left and center. It has several smaller tributary glaciers flowing into it. The surrounding terrain is rugged and mountainous, with some green vegetation and brownish soil visible. The glacier's edge is jagged and uneven. A red location pin is placed on the glacier, with the text 'Vatnajökull' next to it. The ocean is visible in the lower right, and the sky is dark blue with some stars visible at the bottom.

Vatnajökull

Image IBCAO
Image Landsat

Google Earth

Country : Angola
Area : Namib Desert
Sensor : GeoEye-1
Acquisition Date : July 8, 2010
Resolution (GSD) : 0.5 meters



Zooming in with
GeoEye-1, 2010

www.satimagingcorp.com

Copyright © GeoEye 2010. All Rights Reserved.

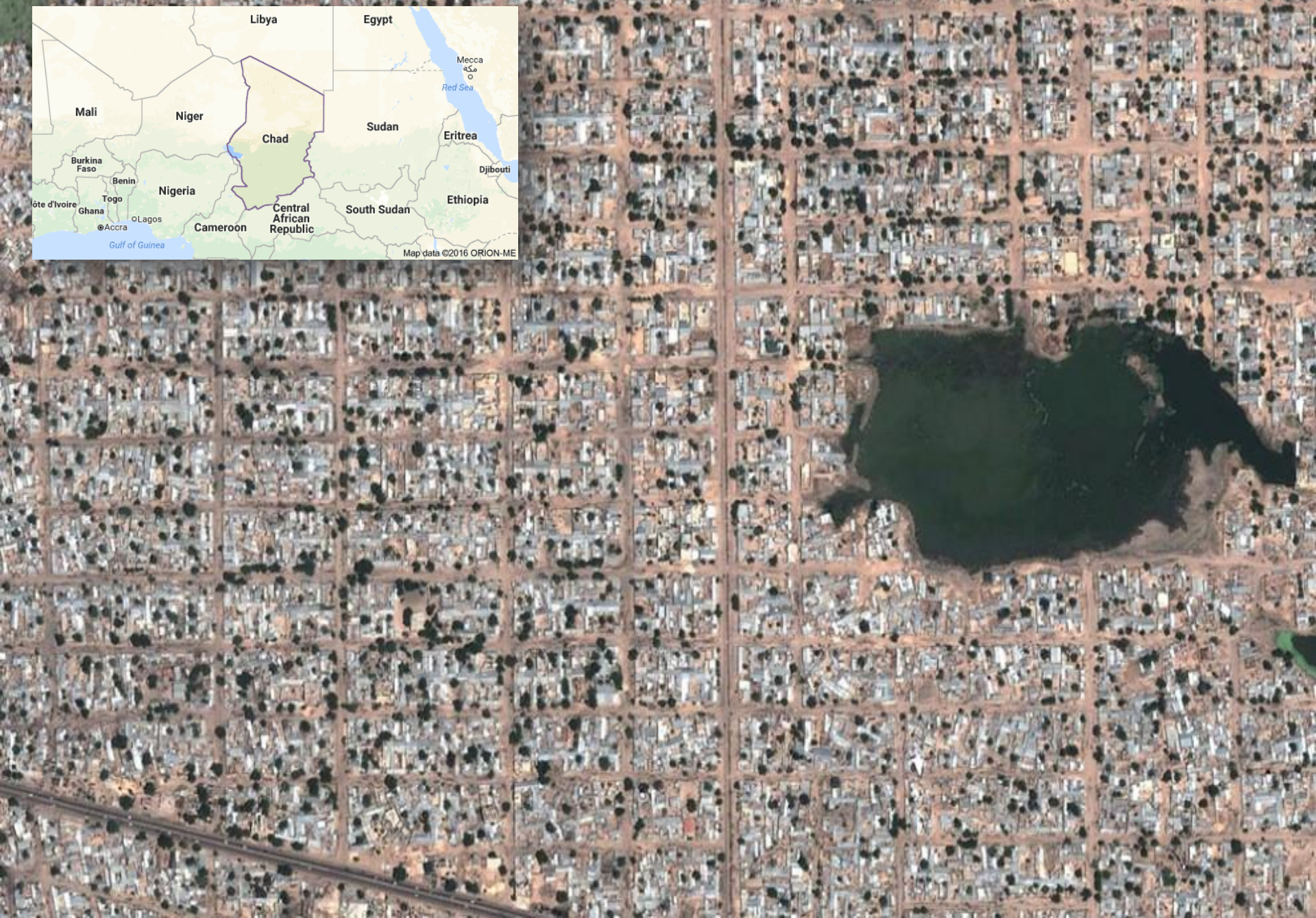
Image © 2016 DigitalGlobe

Google Earth

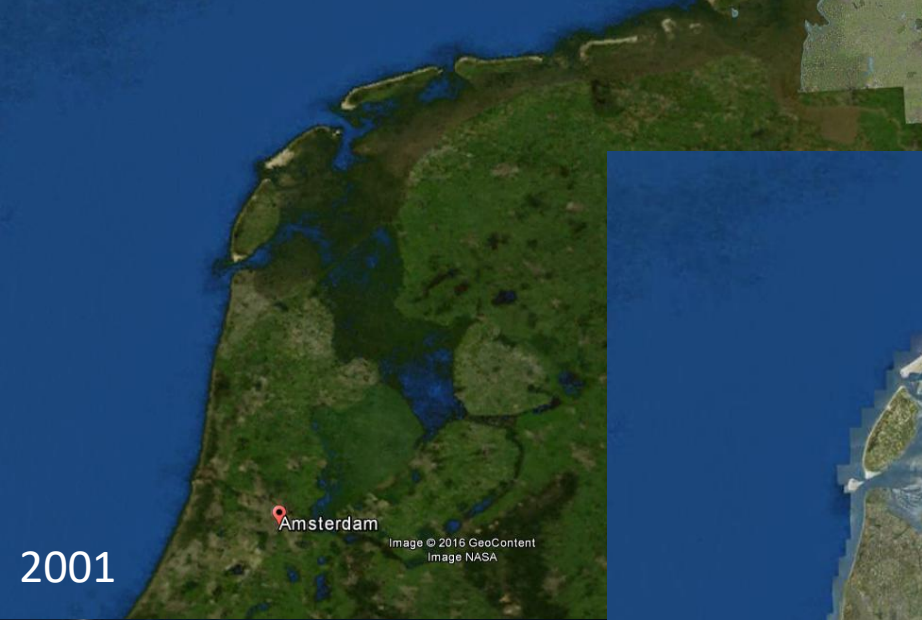
Grand Erg Oriental, Algeria



Homestake Gold Mine, South Dakota, USA



The area of N'Djamena, the capital of Chad



2001

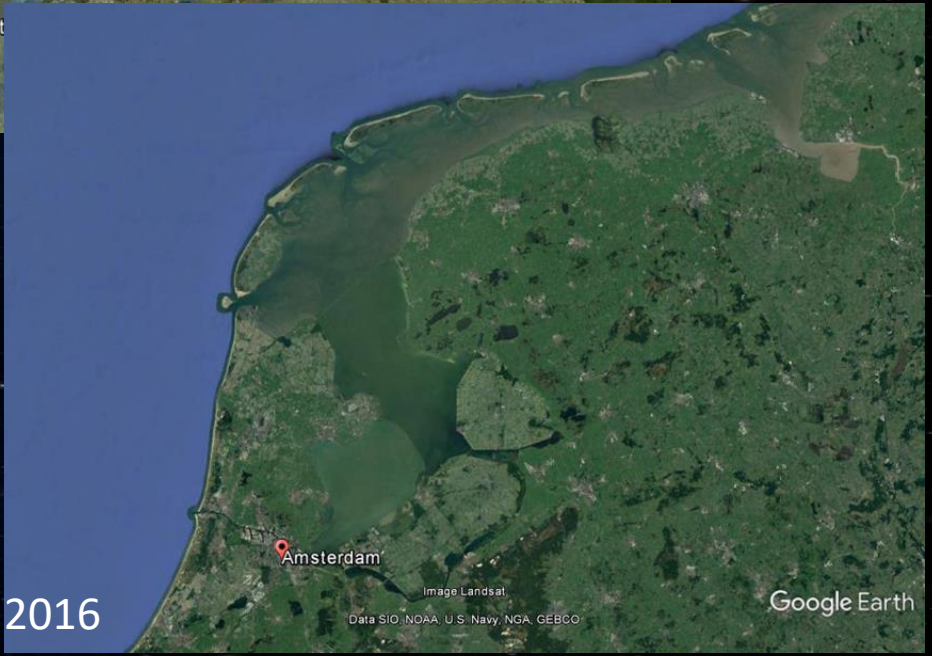
Amsterdam
Image © 2016 GeoContent
Image NASA



2007

Amst

Changes in the land surface of the Netherlands



2016

Amsterdam
Image Landsat
Data SIO, NOAA, U.S. Navy, NGA, GEBCO

Google Earth



Great Pyramid of Khufu, Egypt



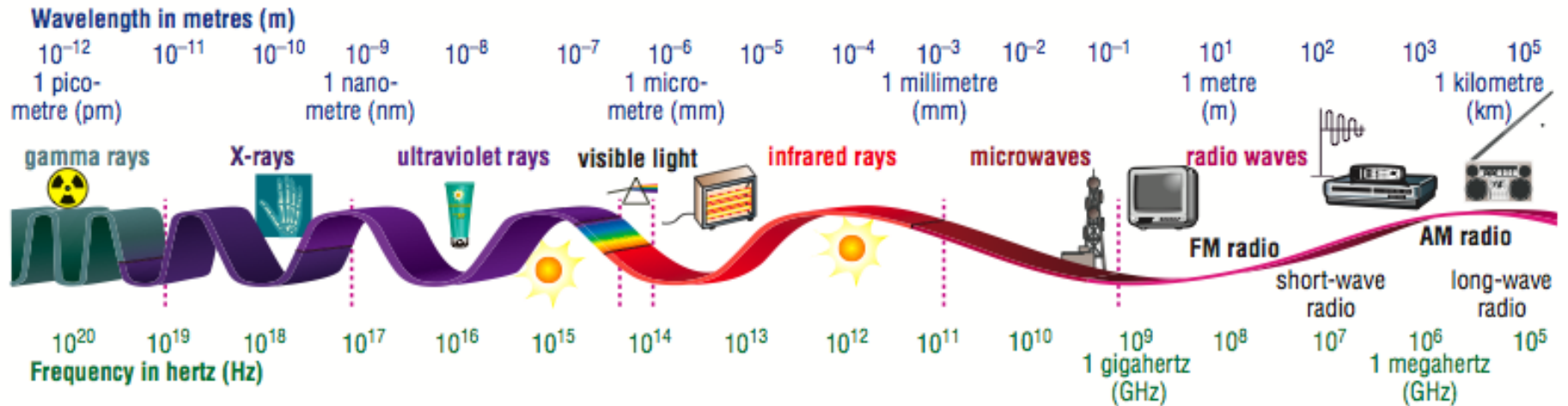
Area : Giza Pyramids, Egypt
Sensor : GeoEye-1
Resolution (GSD) : 0.5 meter



www.satimagingcorp.com

0.5 m resolution
GeoEye-1
Copyright © GeoEye. All Rights Reserved

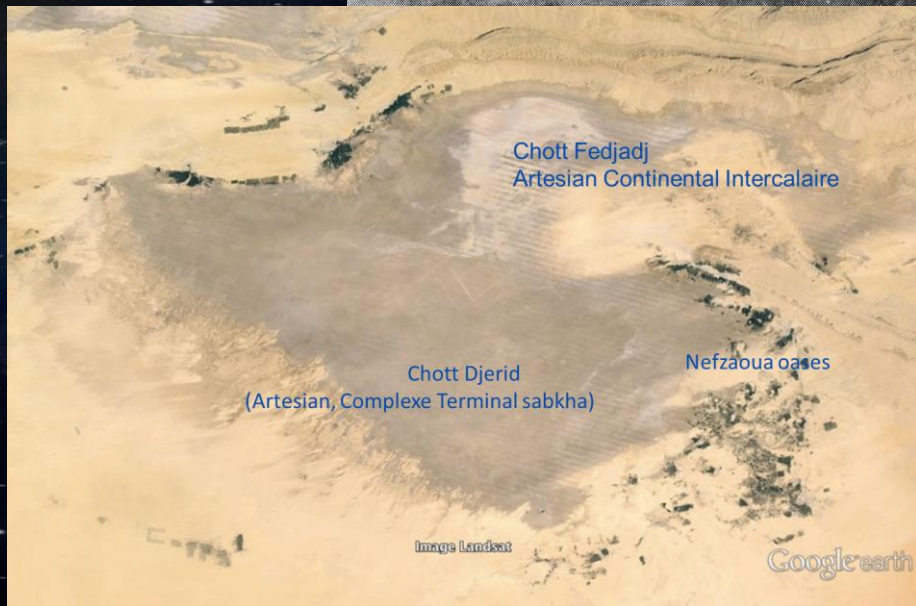
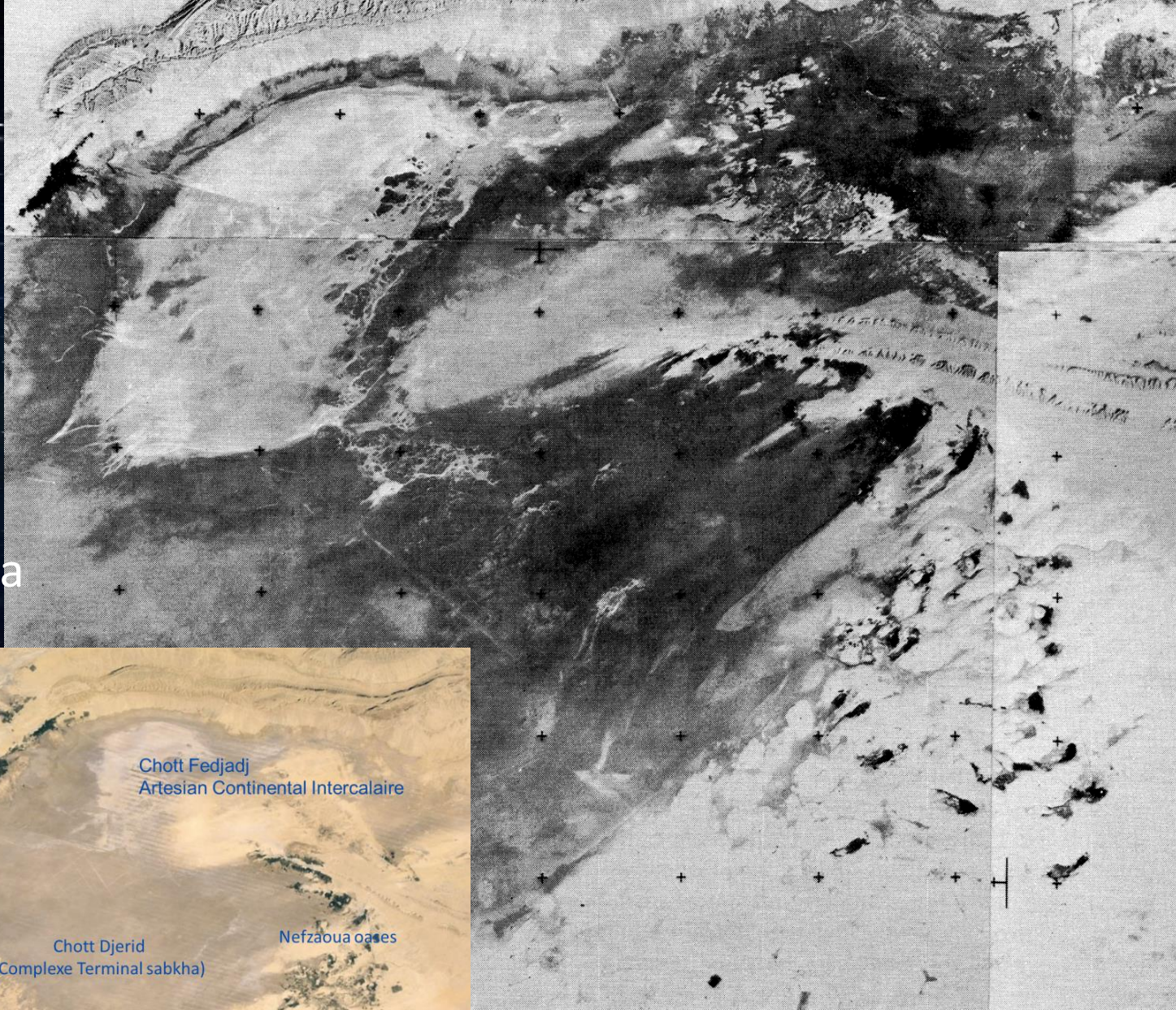
The Electromagnetic Spectrum



Sensors are designed to detect a specific range of wavelengths, depending on the intended purpose. One satellite can carry several sensors, and images can then be combined in different ways to highlight particular features.



Single band
(infrared)
image,
showing
presence of
water in a
mosaic of
hard copy
from the
1980s, Tunisia



'True' colour composite of Southern
Tunisia used by Google Earth



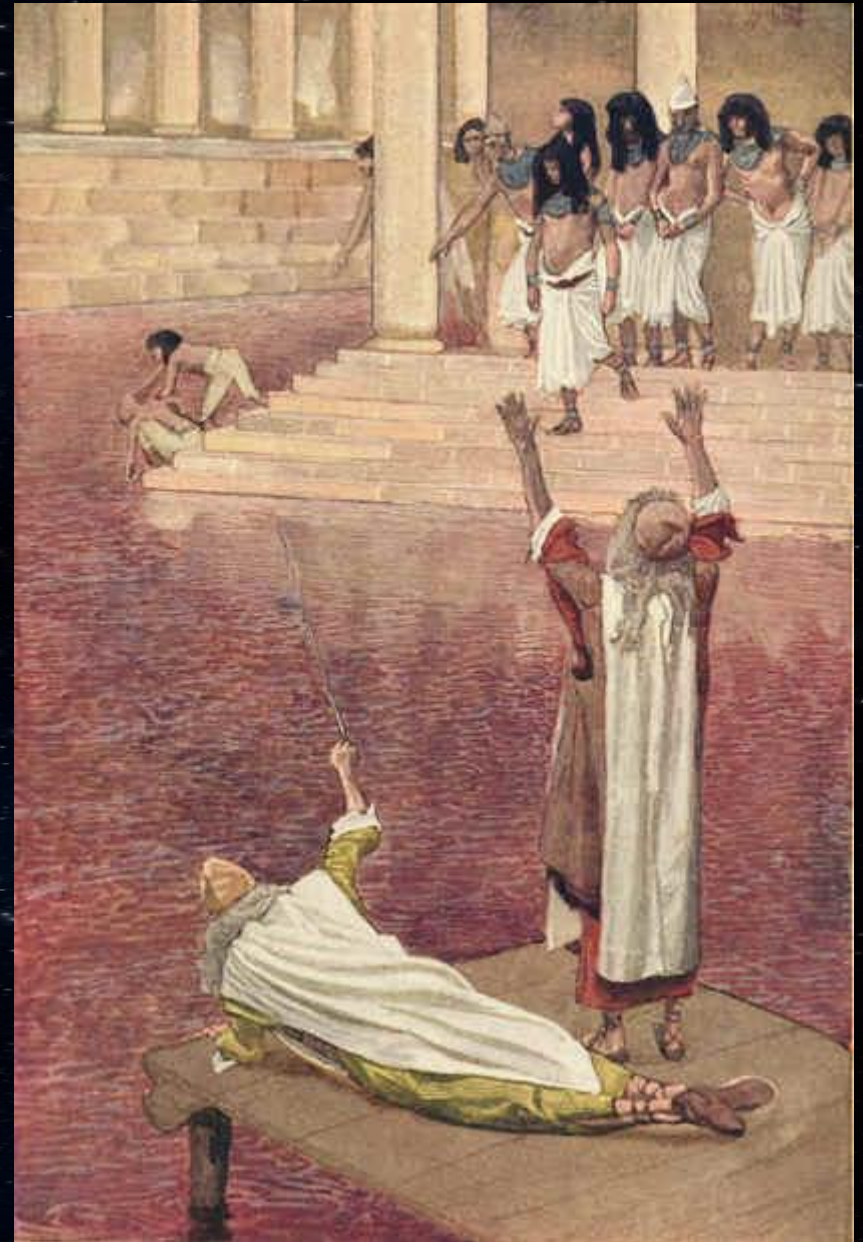
Data SIO, NOAA, U.S. Navy, NGA, GEBCO
Image Landsat

Google Earth

Nile Delta, 'true colour' LANDSAT image

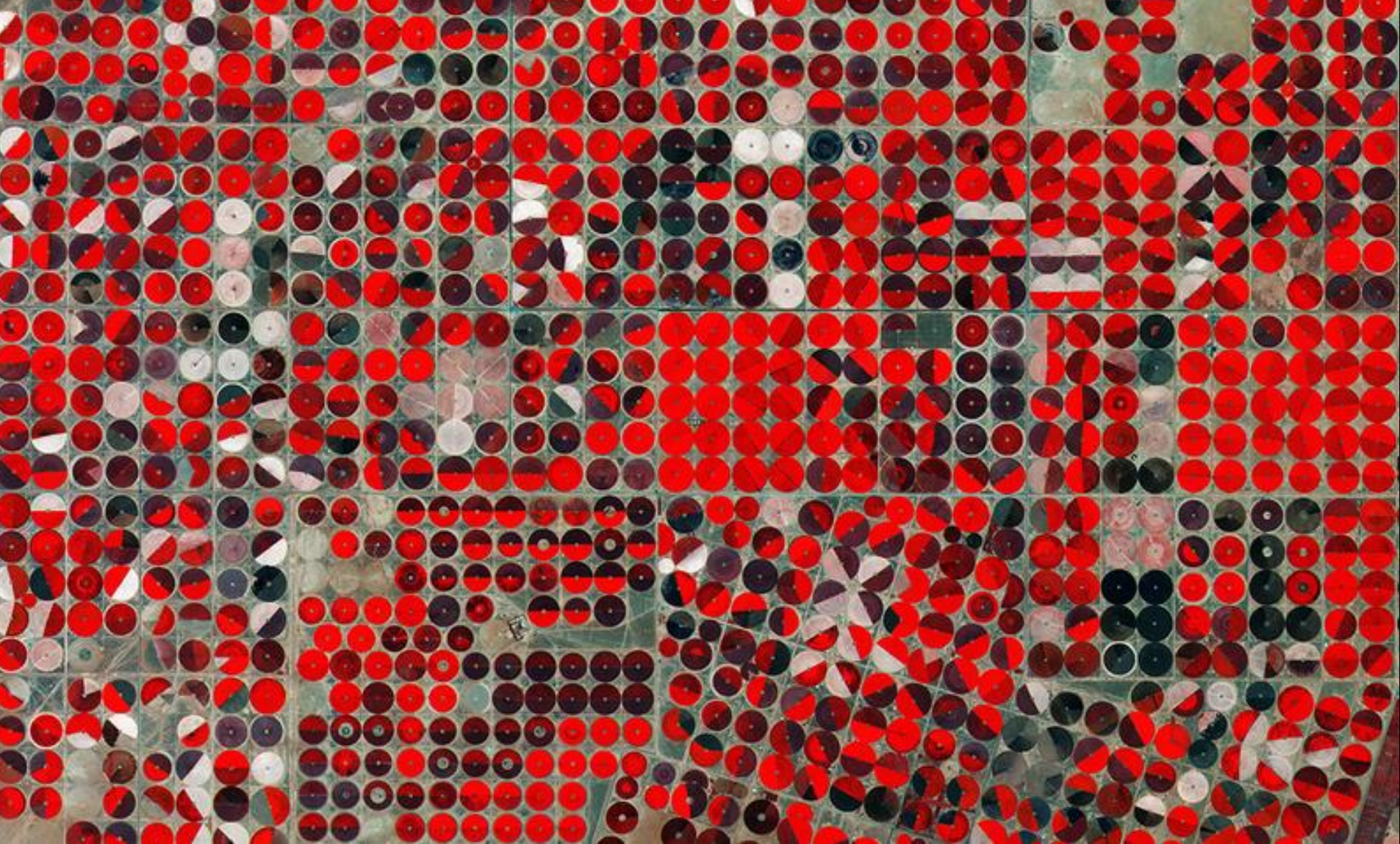
‘The First Plague:
Water Is Changed into
Blood’, by 19th
century French painter
James Tissot

Water bodies are
often shown in red on
‘false colour’ images

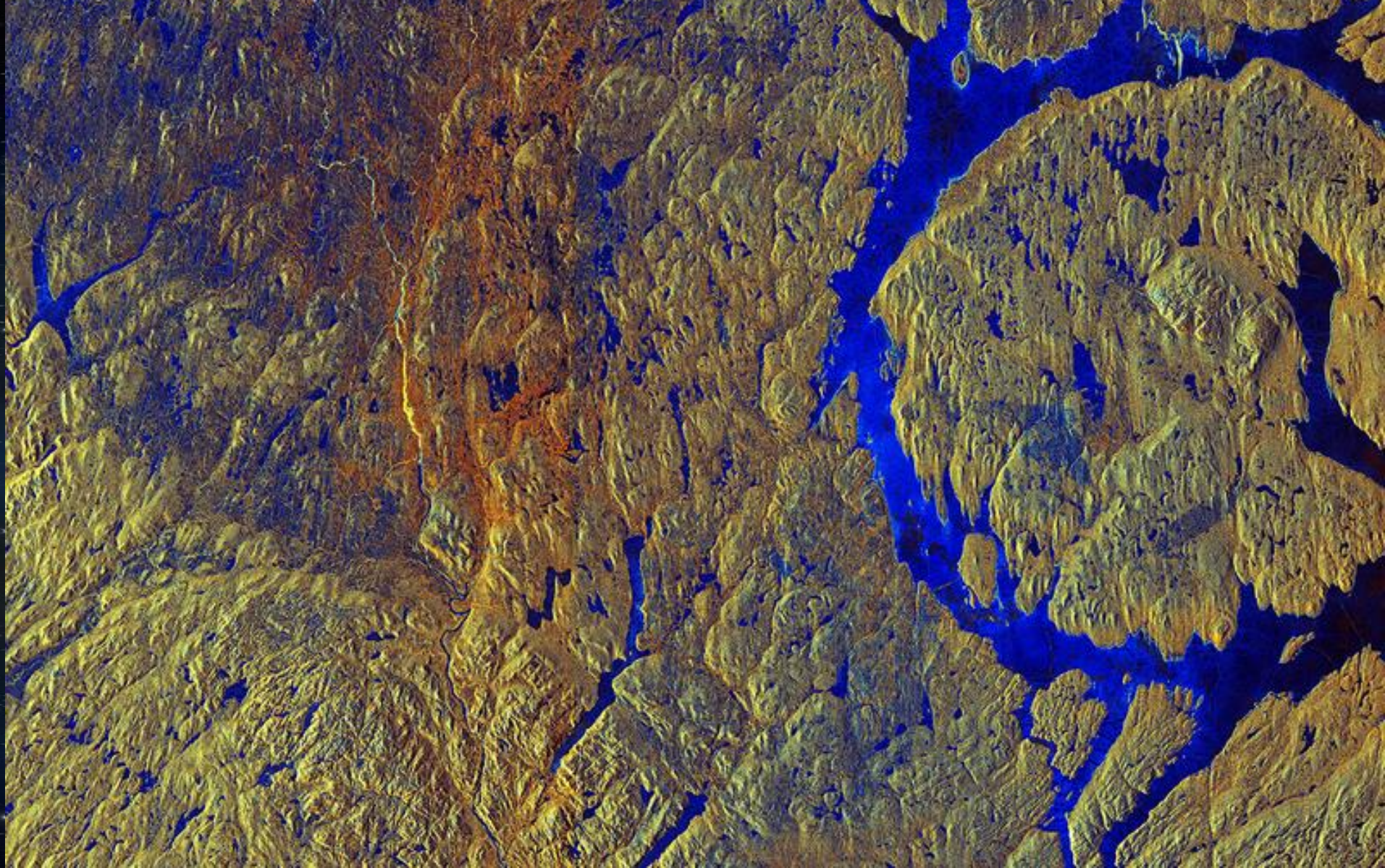




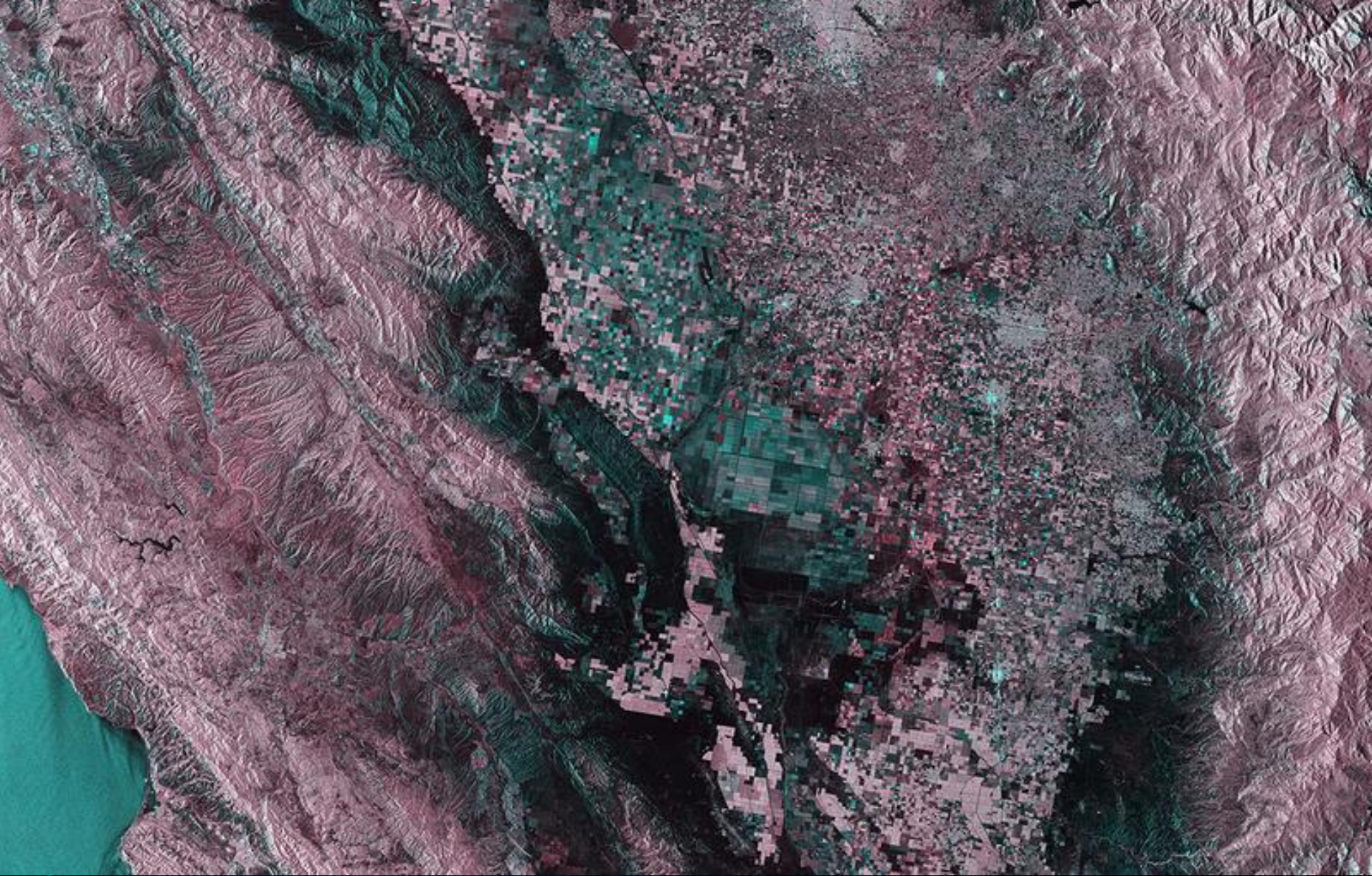
A 'false colour' satellite image of the Nile using infrared technology Areas with high infra red radiation are shown in red (Courtesy European Space Agency, April 2016)



A image from the Sentinel-2A satellite, with infrared showing a central-pivot irrigation system in Saudi Arabia. (Photo: [ESA](#))

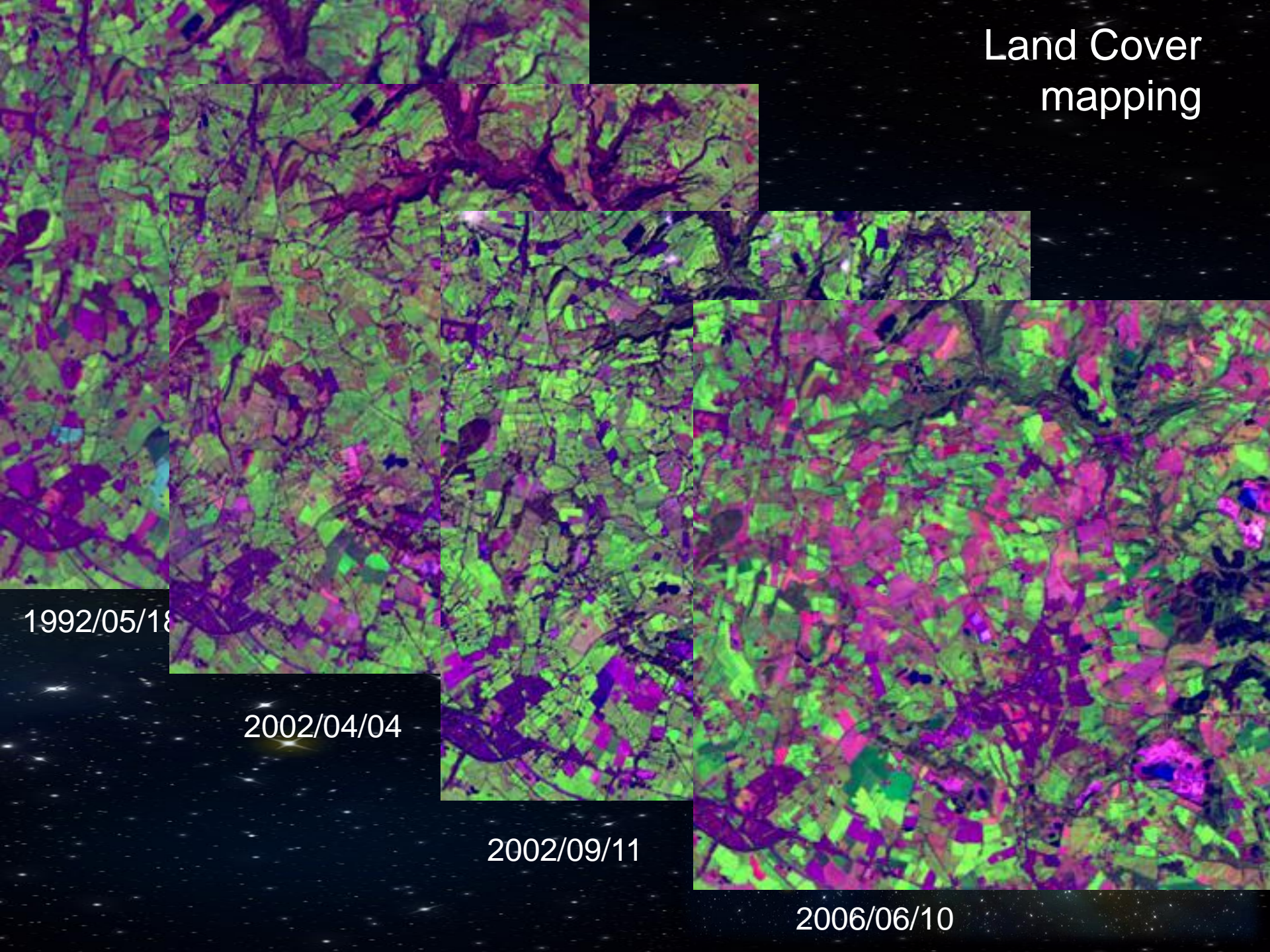


Canada's Manicouagan Crater, created by an asteroid strike. In this false-color radar image, the blue is areas of ice and water and the yellows and oranges are vegetation. (Photo: [ESA](#))



Central California seen through Sentinel-1A's radar, with the San Andreas fault line running diagonally down from top left. (Photo: [ESA](#))

Land Cover mapping



1992/05/18

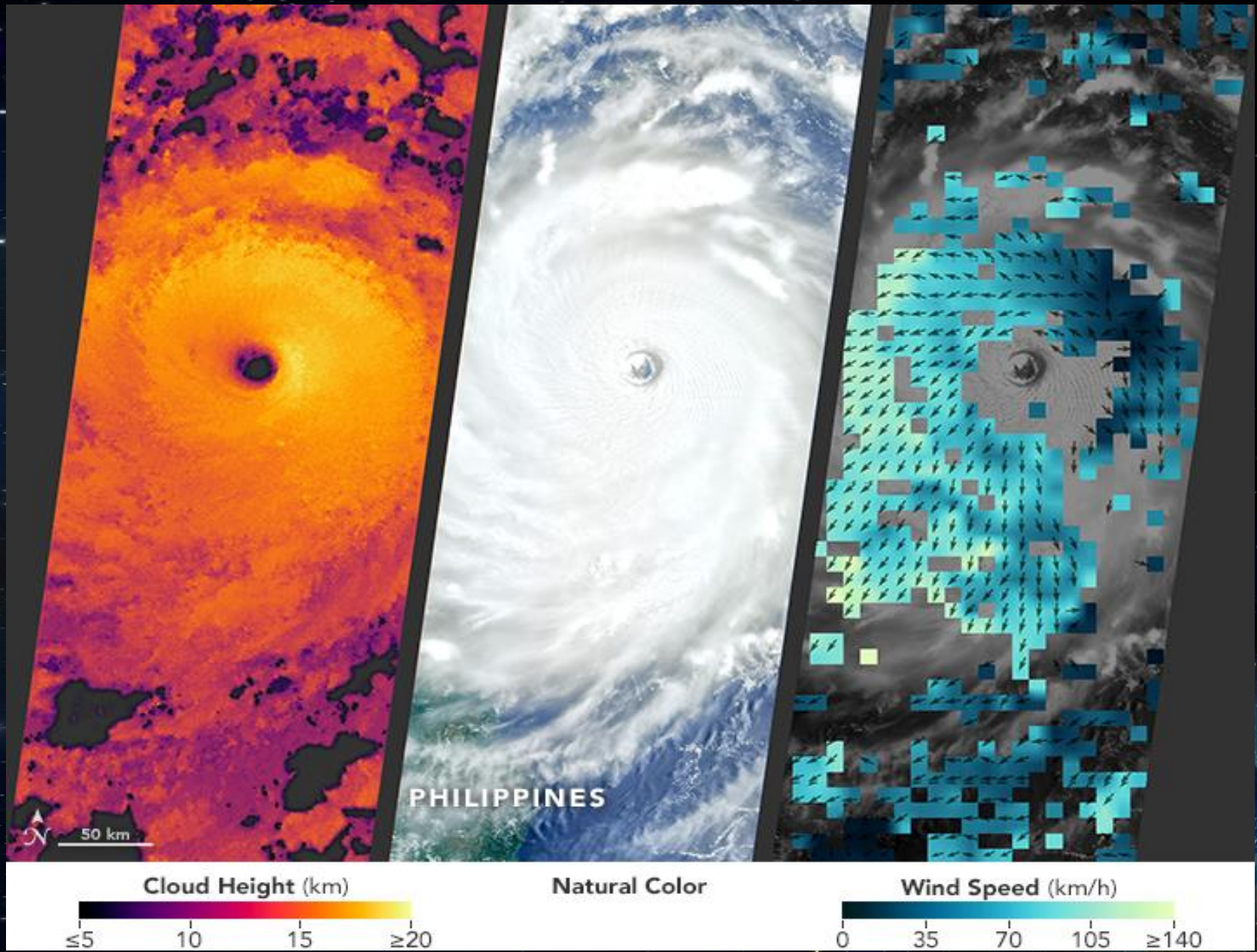
2002/04/04

2002/09/11

2006/06/10

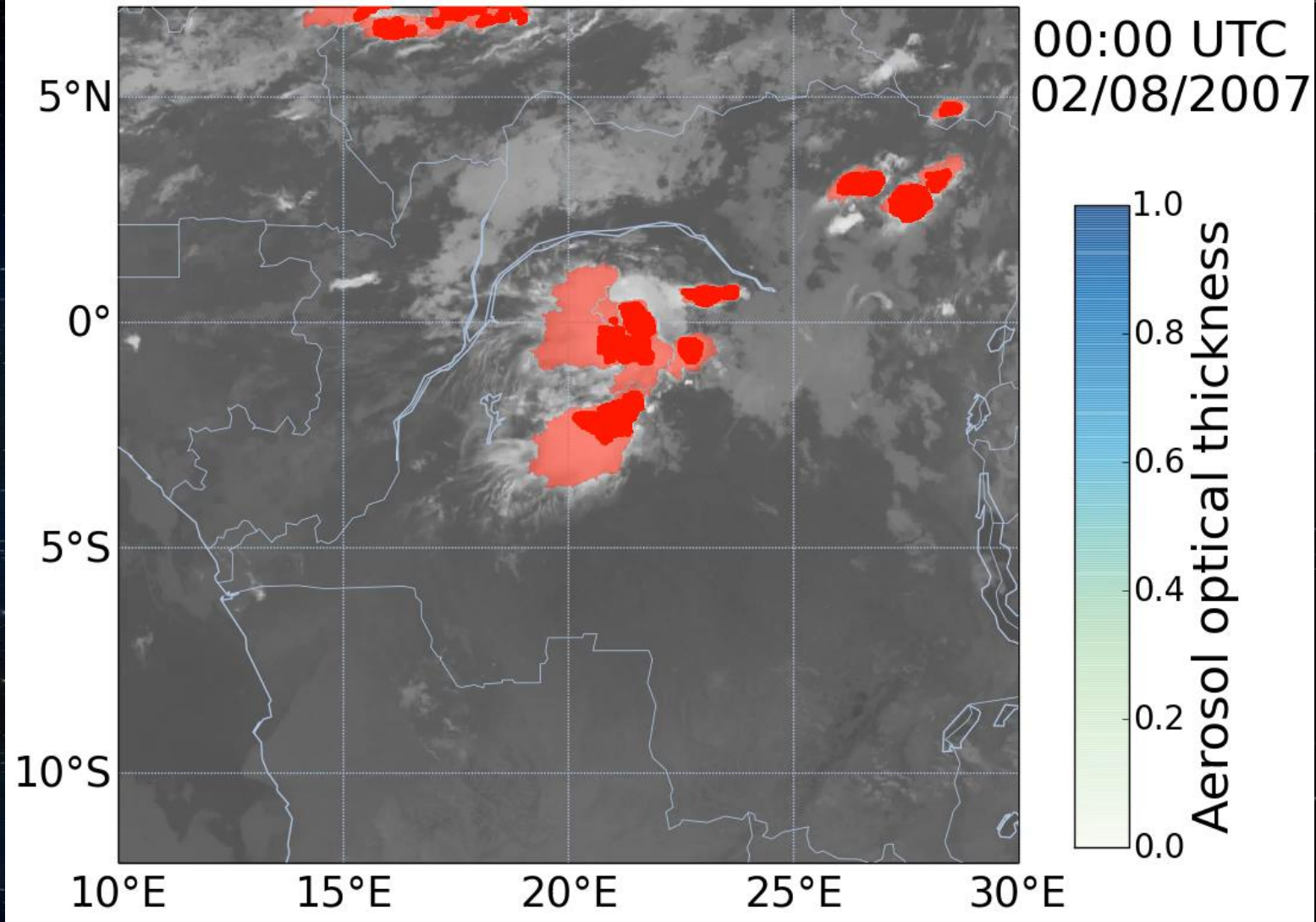
Taiwan



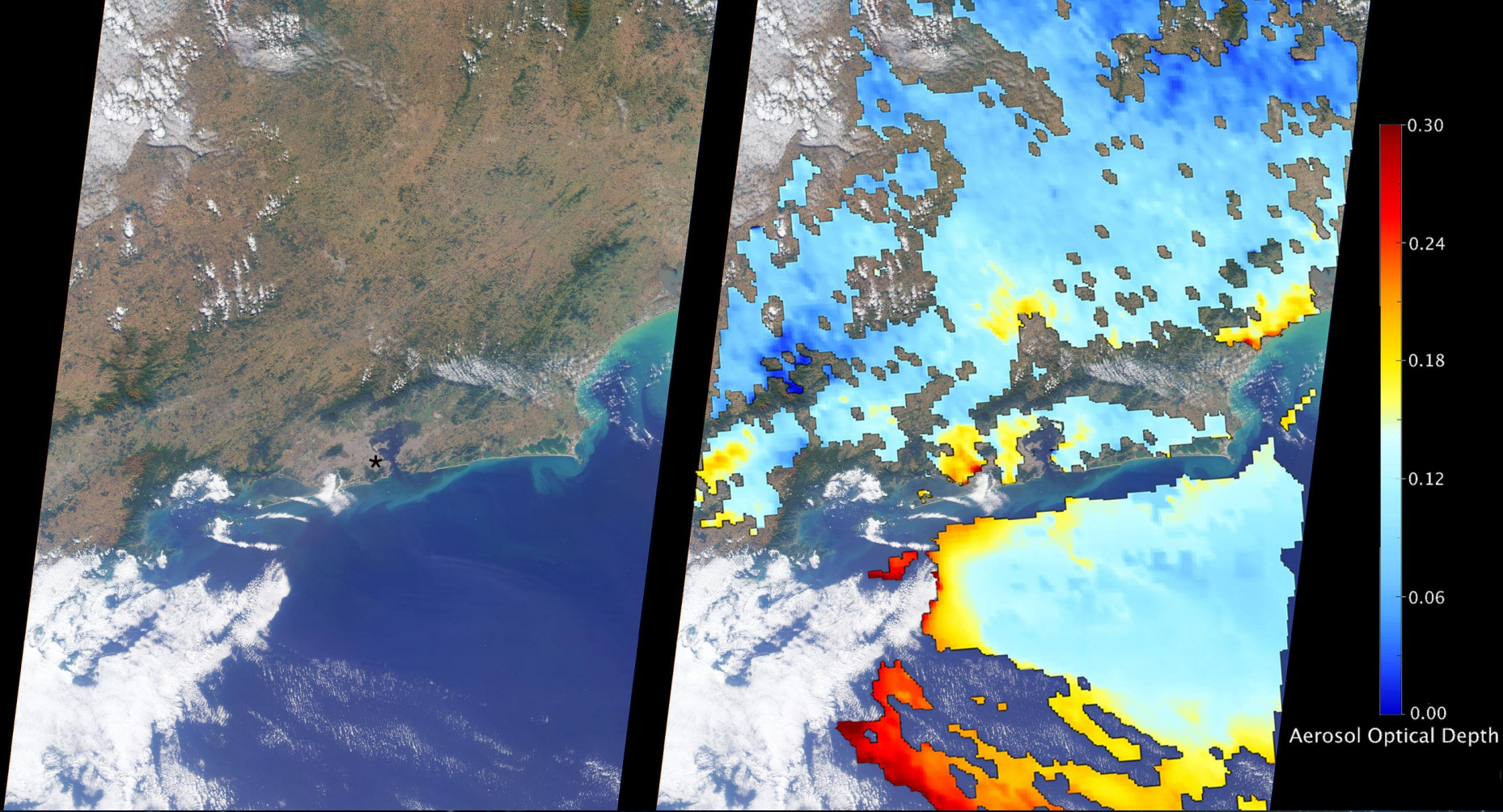




Md=pr Rng=248(0.5) EI=0.5 Mx=51



Convective core of clouds of dust in Saharan areas, work of Nick Schutgens, Philip Stier and others, University of Oxford

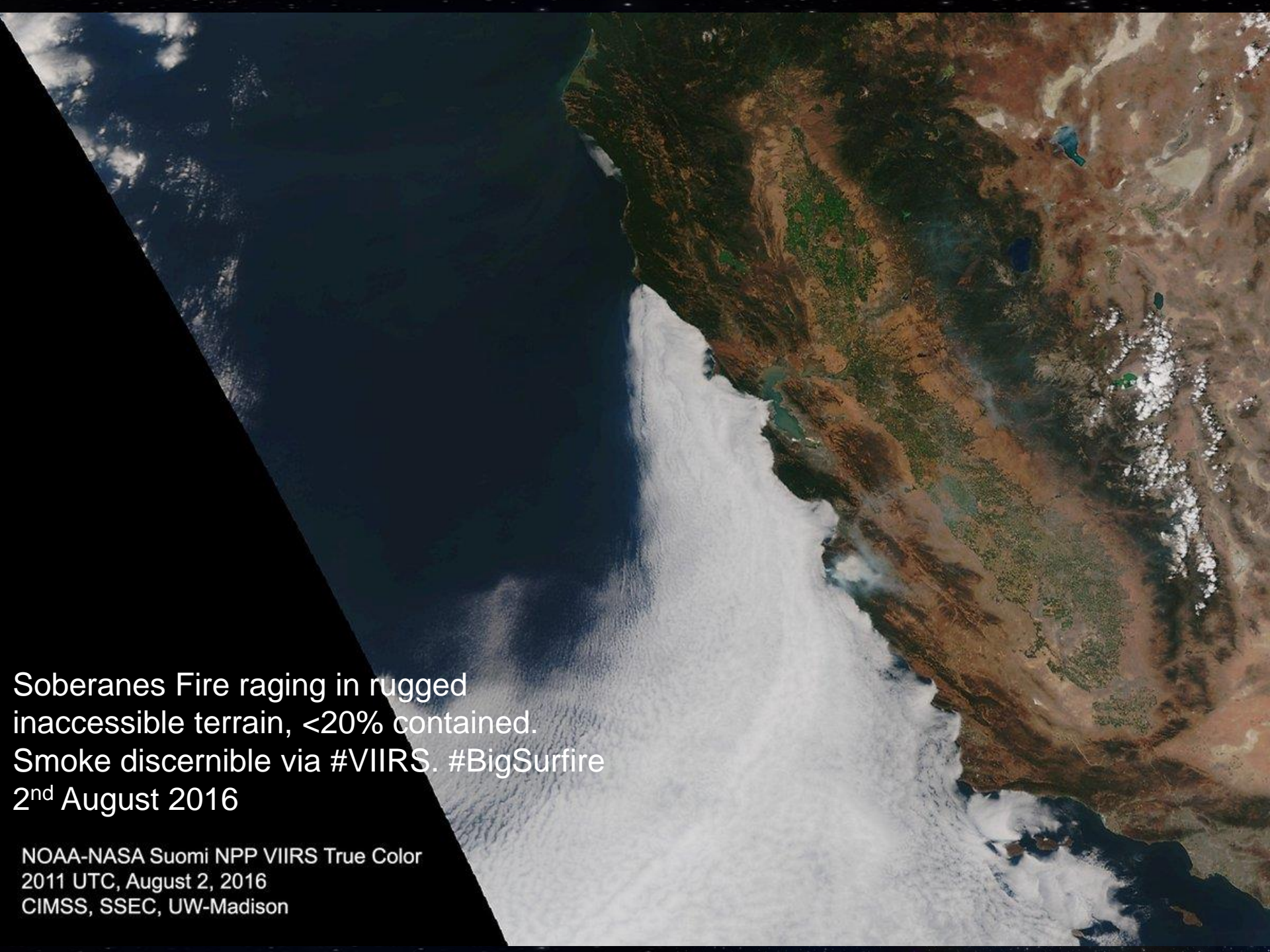


This dual image shows the coastline of Rio as seen from NASA's Terra Satellite. On the left, the image is superimposed with measurements of air pollution that lingers above the city. Credit: NASA/GSFC/LARC/JPL-Caltech, MISR Team



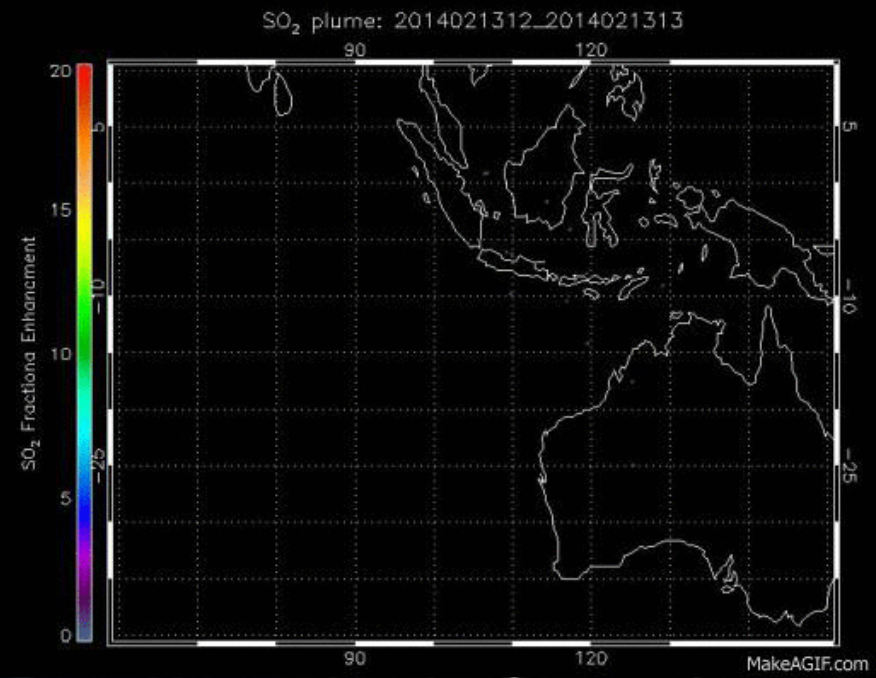
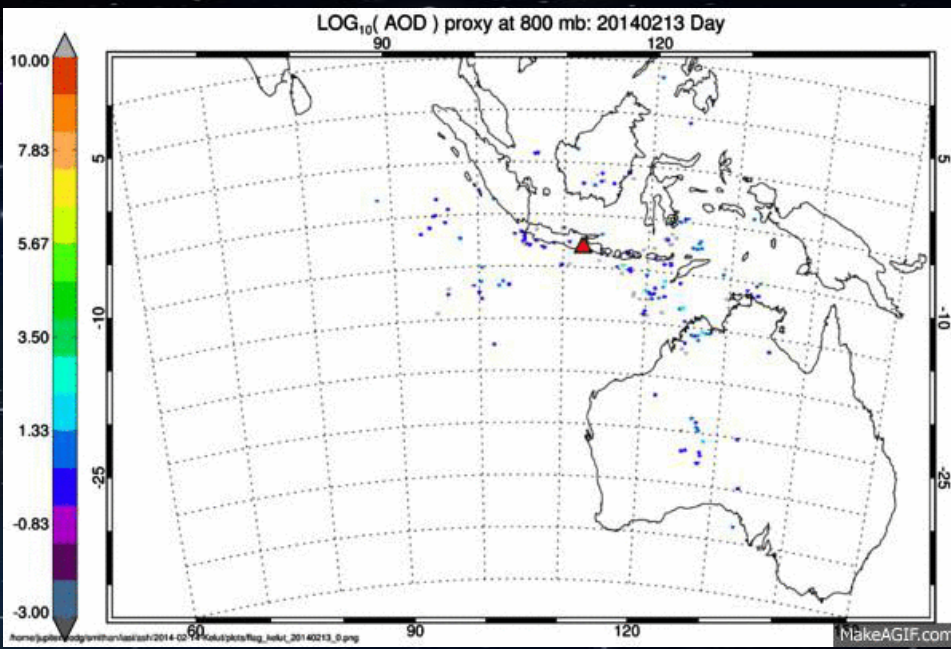


A satellite view of California's Soberanes Fire (Source: NASA Worldview).



Soberanes Fire raging in rugged
inaccessible terrain, <20% contained.
Smoke discernible via #VIIRS. #BigSurfire
2nd August 2016

NOAA-NASA Suomi NPP VIIRS True Color
2011 UTC, August 2, 2016
CIMSS, SSEC, UW-Madison



Tracking ash plumes and Sulphur Dioxide plumes from volcanic activity in Indonesia. Work of Elisa Carboni, Don Grainger and team, University of Oxford





The aurora from the International Space Station

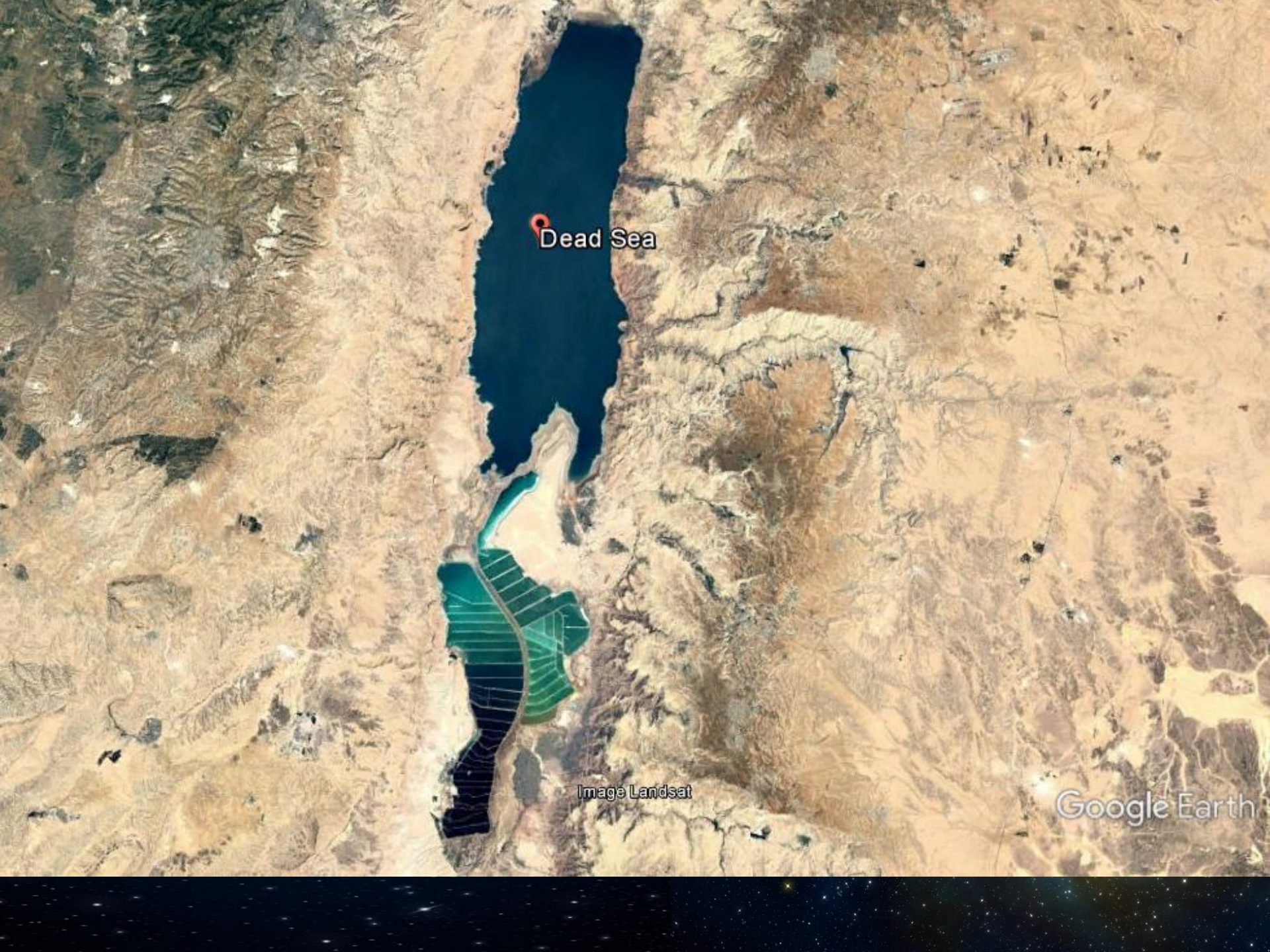
Aurora over Canada and the Northern USA, captured by the SUOMI NPP satellite

FIRE!





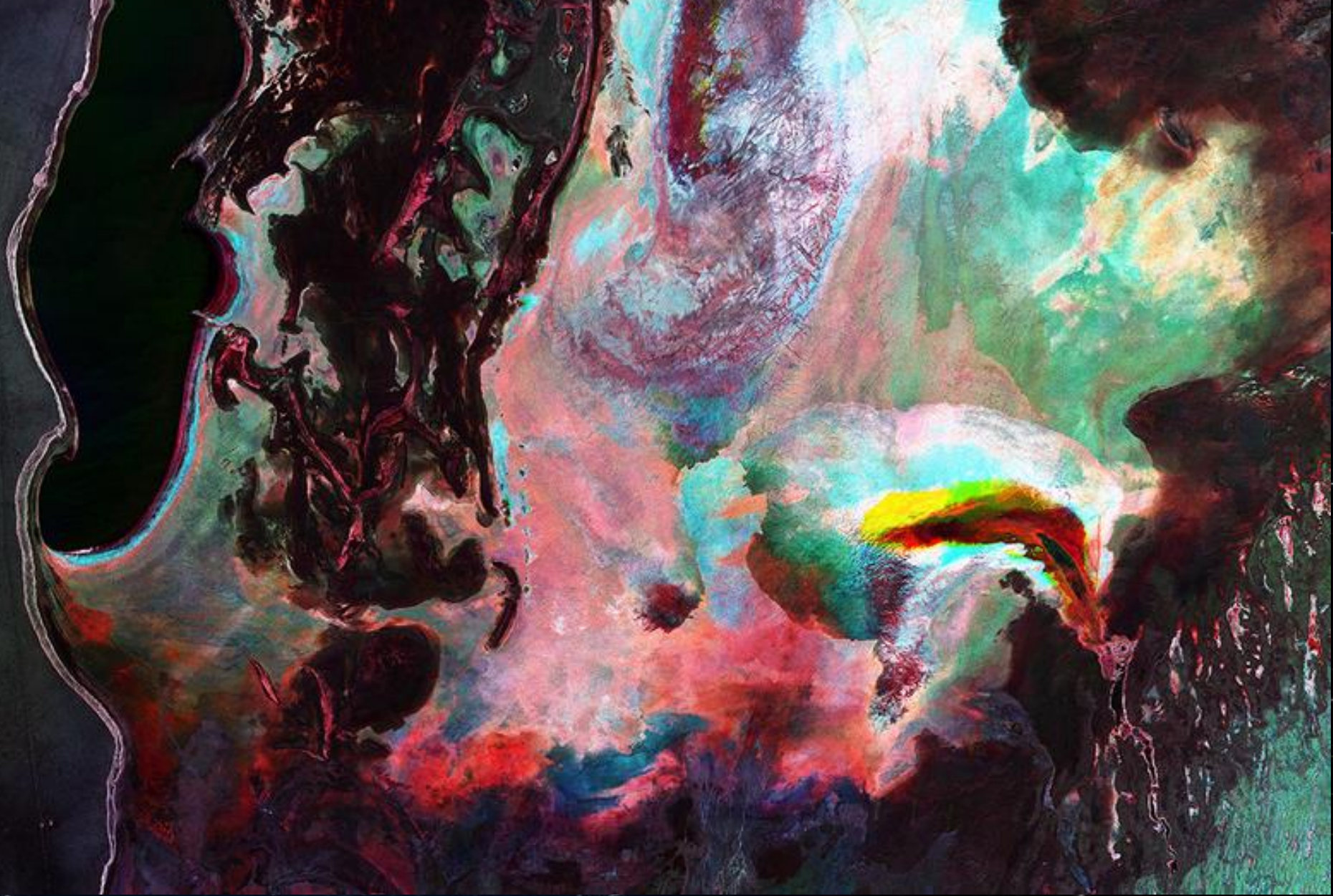
Fossilised meandering, and sediment laden water, Mississippi Basin, USA

A satellite-style map of the Dead Sea region, showing the dark blue water of the sea and the surrounding brown, hilly terrain. A red location pin is placed on the northern part of the sea. The text 'Dead Sea' is written in black next to the pin. In the lower part of the image, there are two distinct areas: one with green diagonal stripes and another with black diagonal stripes. The text 'Image Landsat' is located below these areas. The 'Google Earth' logo is in the bottom right corner.

Dead Sea

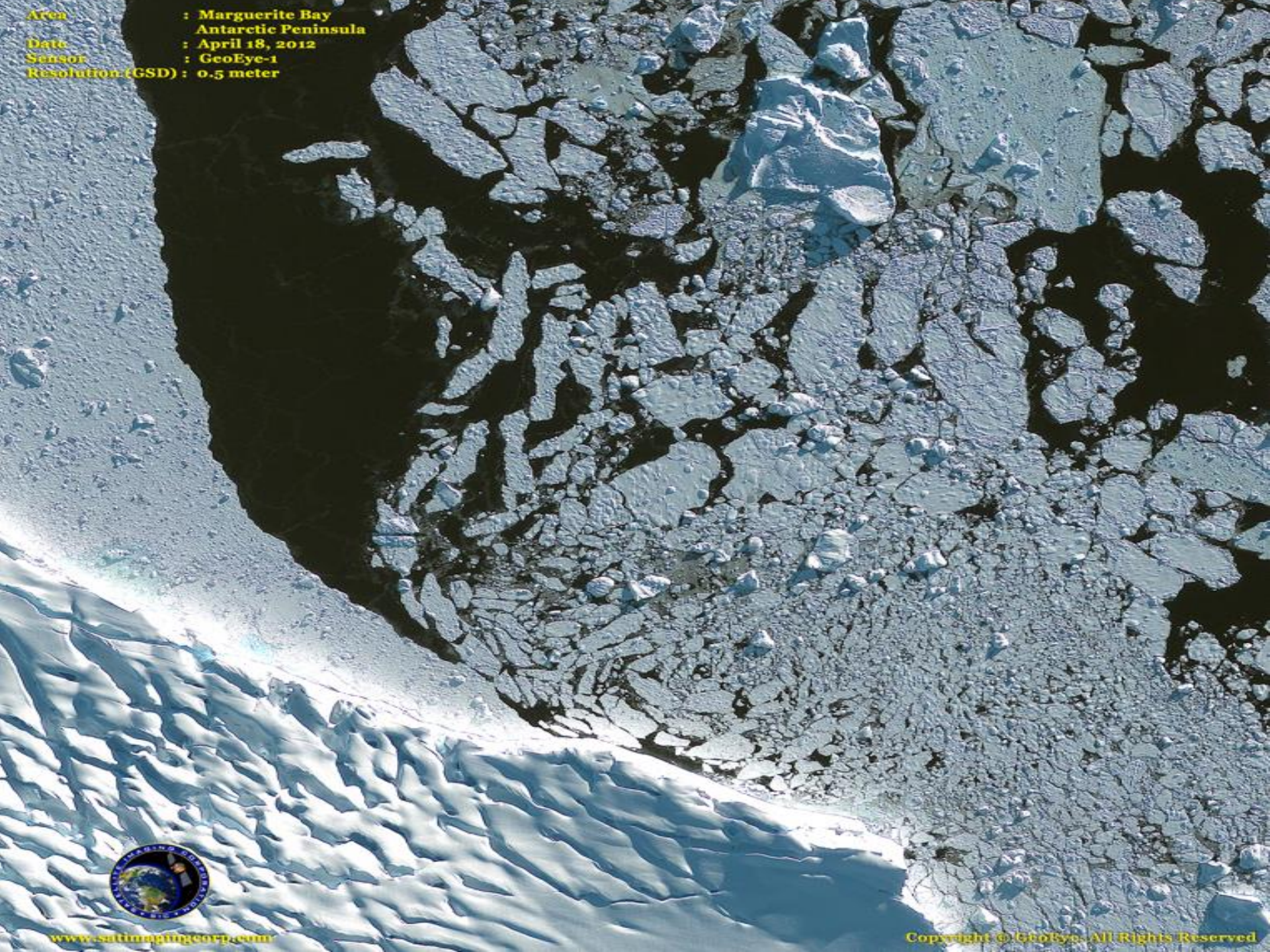
Image Landsat

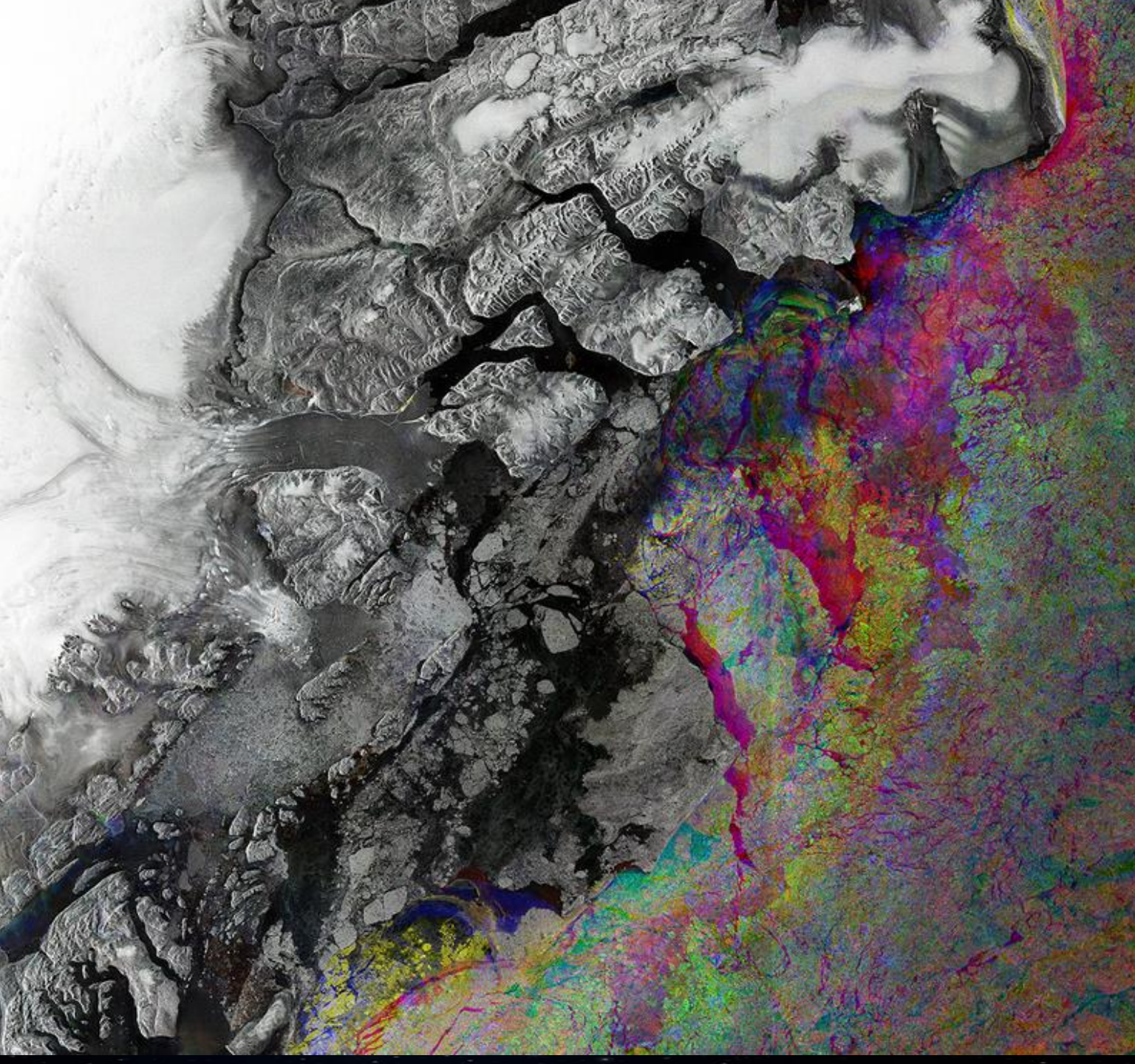
Google Earth



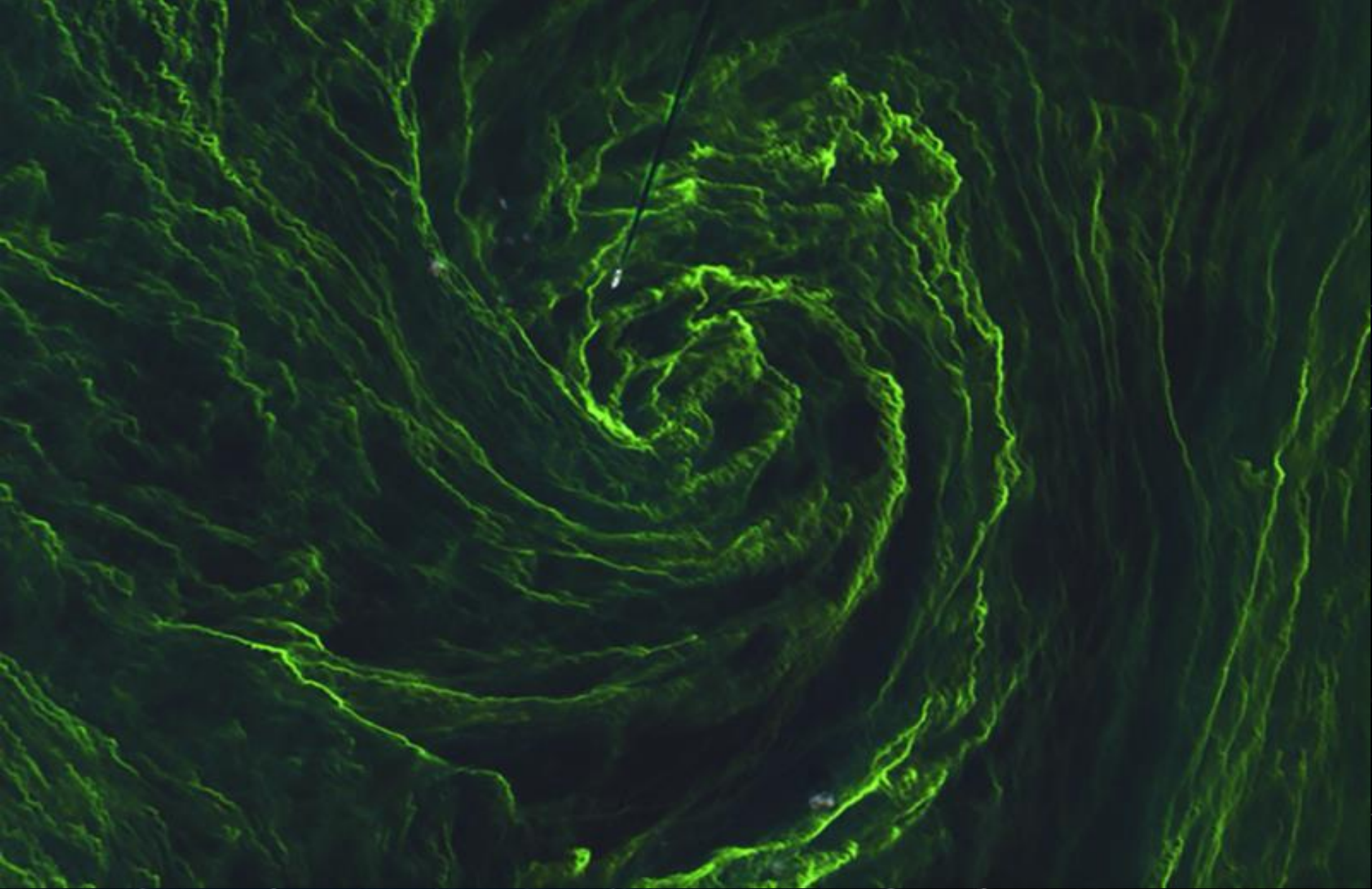
A multi-temporal radar image from Sentinel-1A of the Aral Sea in Central Asia. The name is something of a misnomer: the sea has largely dried up. (Photo: [ESA](#))

Area : Marguerite Bay
Antarctic Peninsula
Date : April 18, 2012
Sensor : GeoEye-1
Resolution (GSD) : 0.5 meter



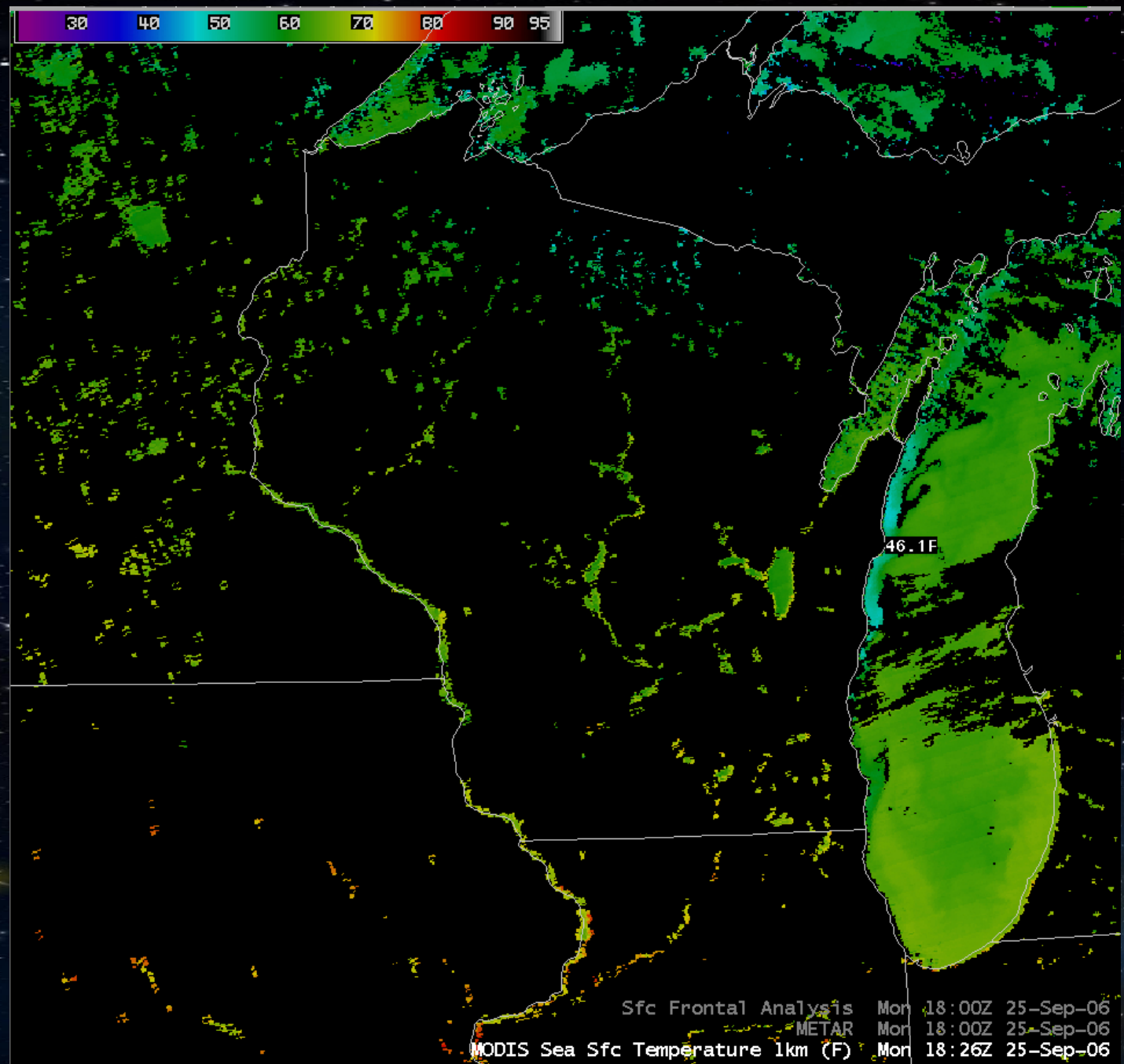


The European Space Agency's Sentinel Satellite has a fundamental application for climate change. In February, March and April 2016, Sentinel-1A captured three radar images of Greenland's northeast coast. The composite is a vividly detailed, half monochrome, half rainbow image. The colours indicate the changes in sea-ice during the three-month period. The same satellite is monitoring Greenland's Zachariae Isstrom glacier, in near-real time (in the image at centre-left), such is the state of its erosion by warmer water.



An algae bloom in the Baltic Sea, as pictured by Sentinel-2A. A boat cuts down from the top of the image. (Photo: [ESA](#))

Upwelling
of cool
water in
Lake
Michigan «
CIMSS
Satellite
Blog
cimss.ssec
.wisc.edu





Costa Concordia, Isola de Giglio, Tuscany, Italy in 2012. 33 died.

[pinterest.com](https://www.pinterest.com)

Left Panel Vessel Information:

IMO Number	8293221
Flag	Liberia
MMSI	10292837
Call Sign	NAK3
Reg No	
Gross Tonnage	
Owner	Hawk Ltd
Operator	Hawk Ops
Vessel Type	Fishing Vessel
SOG/COG	/
AIS Date	2013-09-03T 21:38:51Z

Right Panel Vessel Information (BW Denise):

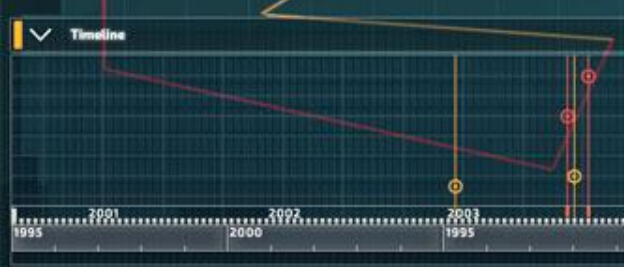
IMO Number	9193733
Flag	Liberia
MMSI	9248368
Call Sign	LAMW7
Reg No	
Gross Tonnage	
Owner	BW Gas LPG Ltd
Operator	BW Gas AS
Vessel Type	Tanker
SOG/COG	/
AIS Date	2013-09-03T 21:38:51Z

Alert Filter Panel:

- Area: []
- Vessels: []
- Date: []
- AIS: ON
- Proximity Alert: OFF
- Exclusion Zone Alert: OFF
- Slow Alerts: OFF

Speed Settings:

- 7.0kn
- 10kn
- 220m
- 400m
- 2
- 4



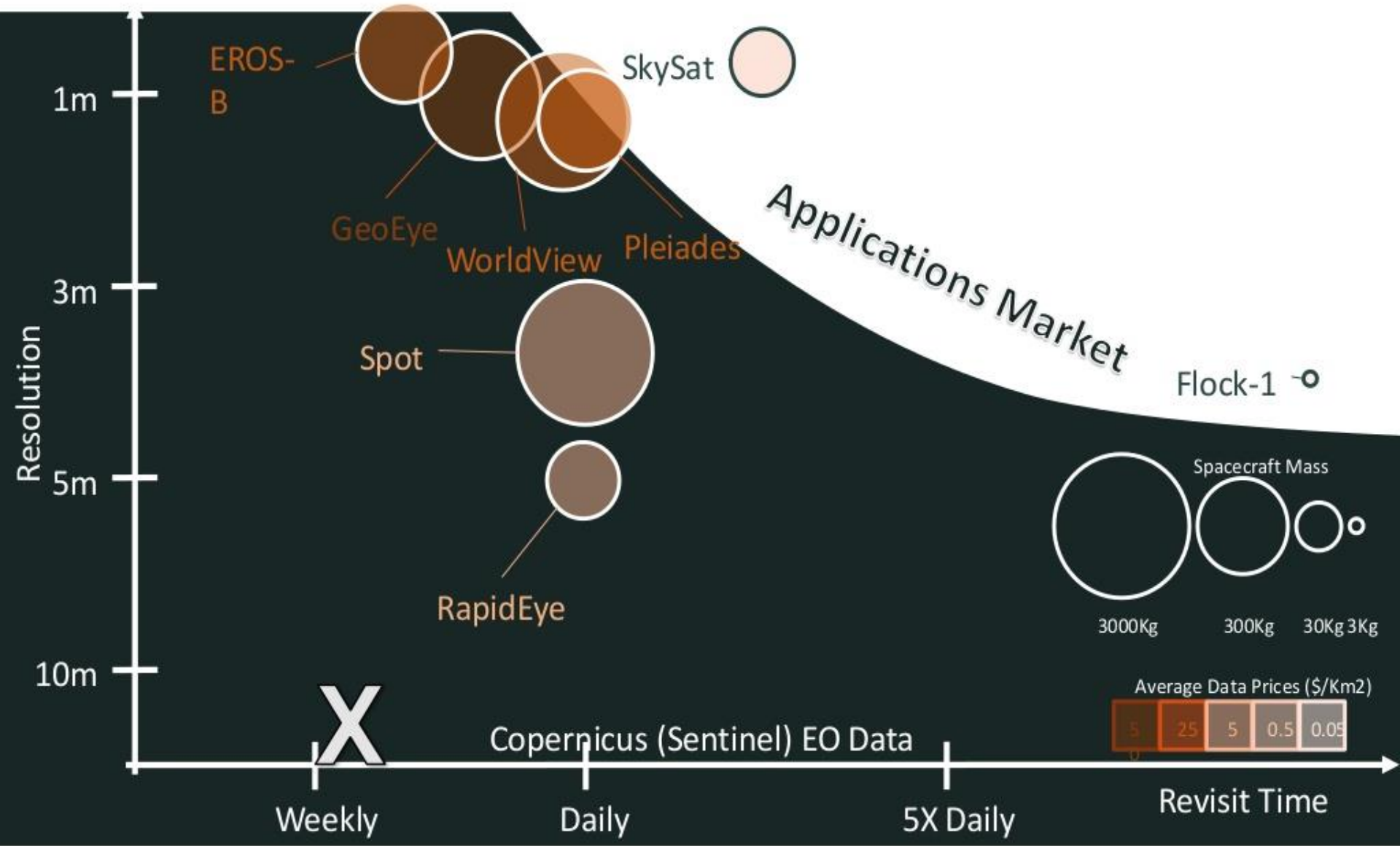
Inset Image: A satellite view of a ship (Wavestorm 3 Cargo Belize) with red circles and lines indicating its AIS/S-AIS tracks. The ship is shown in a top-down view, and the tracks are overlaid on the satellite imagery.

Legend:

- AIS/S-AIS
- VMS
- Synthetic Aperture Radar (SAR)
- Electronic Intelligence (ELINT)
- Existing Databases
- Combined with Satellite Imagery

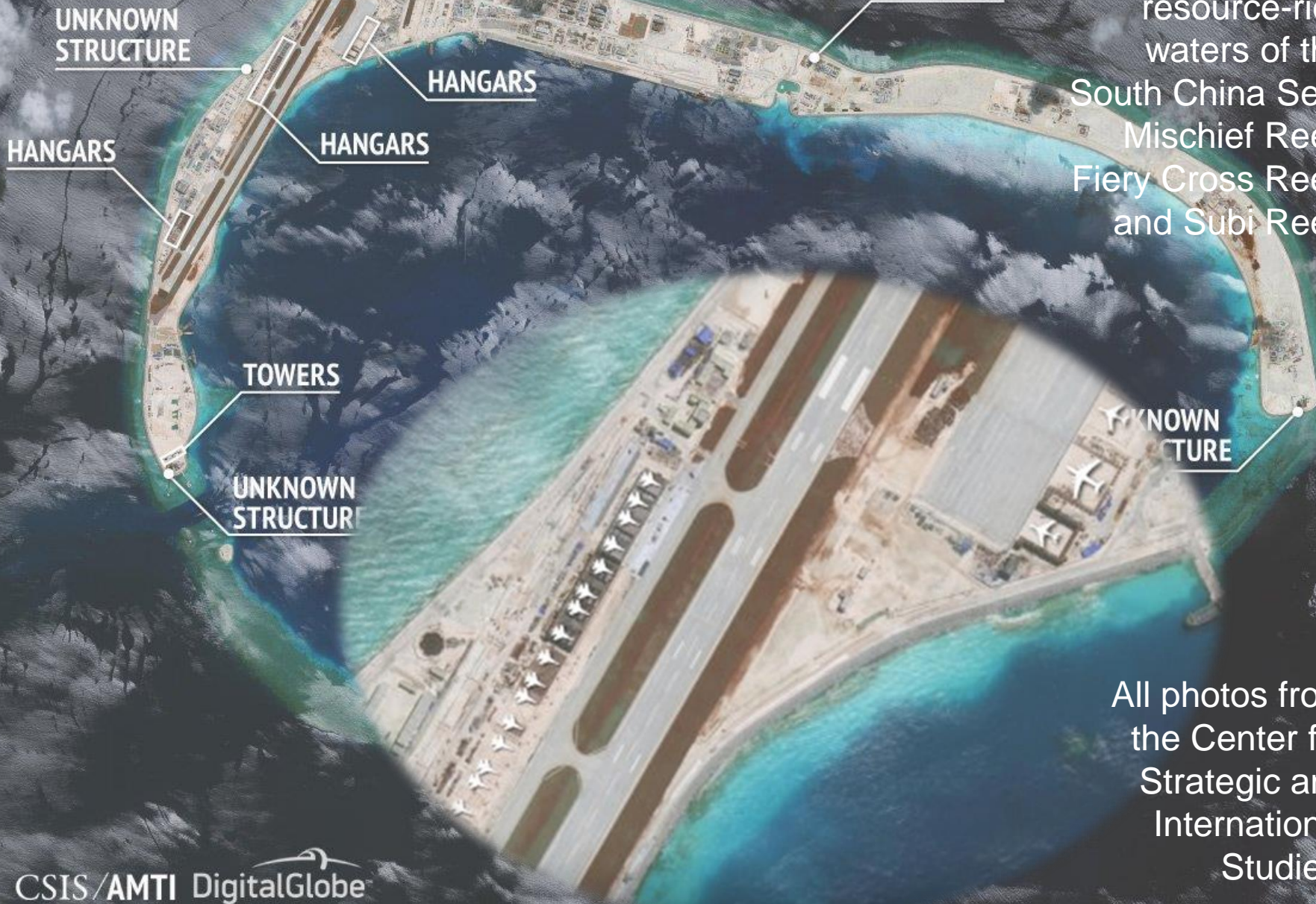
Ship Name: Wavestorm 3 Cargo Belize 3/7/2013 08:00

Improvements in resolution come at a price



MISCHIEF REEF

July 22, 2016



Rapid Chinese construction in the resource-rich waters of the South China Sea. Mischief Reef, Fiery Cross Reef, and Subi Reef.

All photos from the Center for Strategic and International Studies.

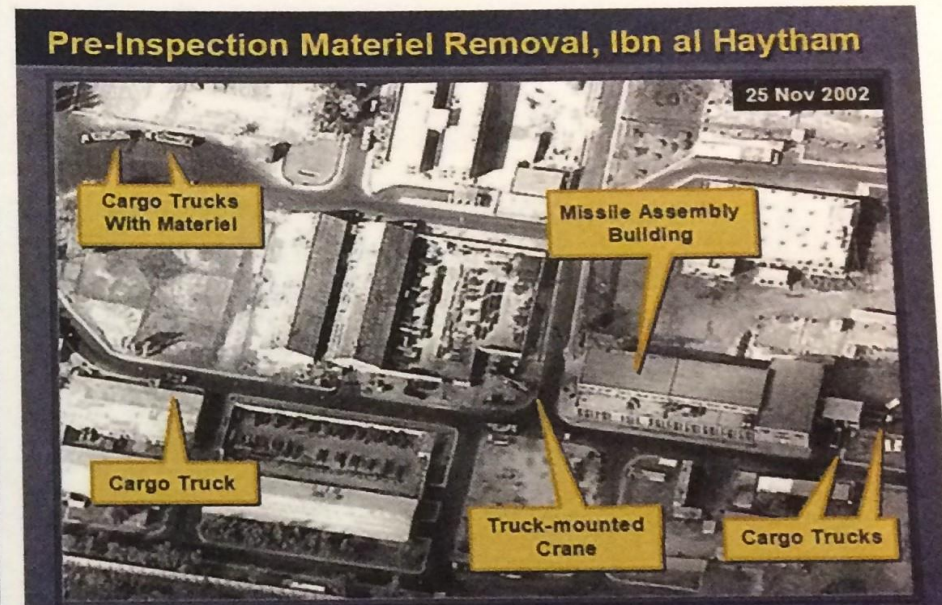
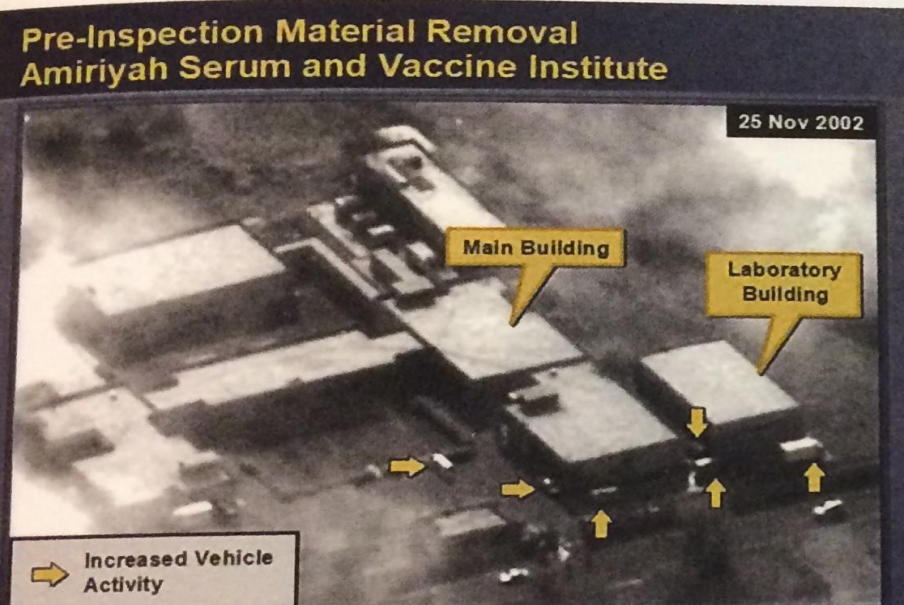
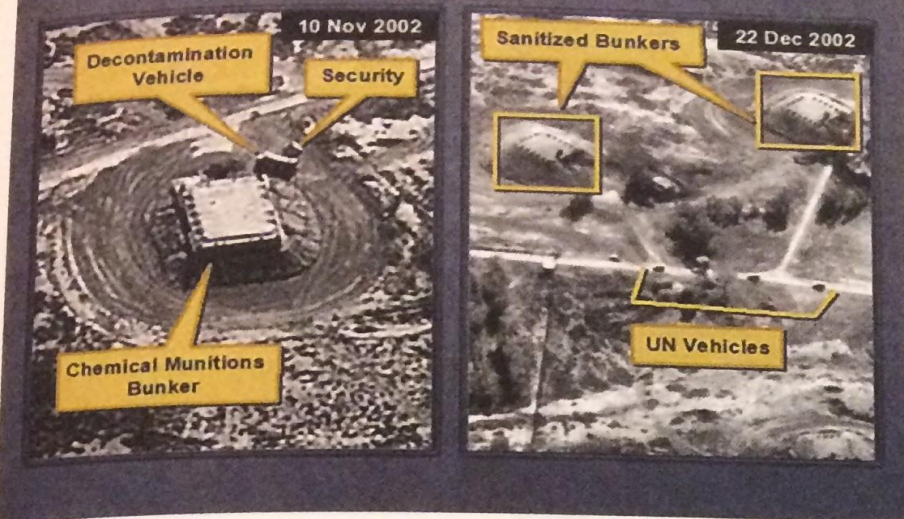
SUBI REEF
July 24, 2016



Please note the aircraft in the above satellite image were added for illustrative purposes.

CSIS/AMTI DigitalGlobe

*Aircraft shown for illustrative purposes



Four slides from US Secretary of State Colin Powell's presentation on Iraq to the UN Security Council, 5th February 2003. Many satellite images were displayed that day without access to the original satellite data. Images from US Department of State.



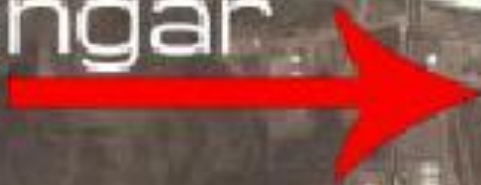
Image © 2016 Getmapping plc

Google Earth

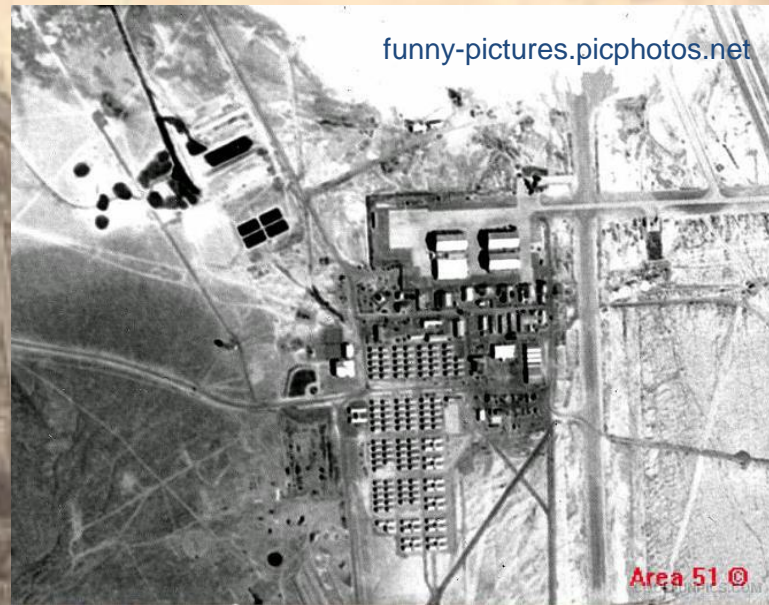
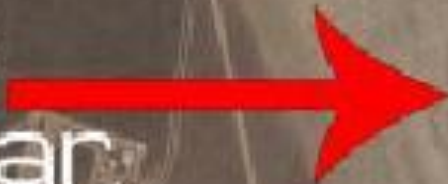
GCHQ, Cheltenham, Gloucestershire

Area 51, Nevada, USA

2007
Hangar



2014
Hangar





US Air Base Area 51, NE of Las Vegas.
Posted by 'Earthly Mission'.

The U.S. government did not acknowledge the base until 2003, so it was a frequent subject of conspiracy theories and UFO folklore. It does not appear on public U.S. government maps, which show only a disused mine.

The original film taken by U.S. Corona Spy satellite in the 1960s was altered prior to declassification; in answer to freedom of information queries, the government claimed that the pictures had been destroyed. Terra satellite images (which were publicly available) were removed from web servers in 2004, and from the monochrome 1 m resolution USGS data made publicly available. NASA Landsat images are still available. Higher resolution (and more recent) images from other satellite imagery providers (including Russian providers and IKONOS) are commercially available. These show, in detail, the runway marking, base facilities, aircraft, and vehicles.

127 Lothian Rd, Edinburgh, Scotland, United Kingdom
Address is approximate



© 2009 Google

[Report a problem](#)

Opinion on Google Earth from North of the border?



Yarm School roof, Stockton-on-Tees, in 2006, and 2016



**BIG BROTHER IS
WATCHING YOU**



www.satimagingcorp.com

Copyright © DigitalGlobe. All Rights Reserved

Wildebeest migration, Kenya

DigitalGlobe

Barra Olympic Park 1JUL2012



DigitalGlobe

Barra Olympic Park 23AUG2013





Barra Olympic Park 12APR2015



Barra Olympic Park 13JUN2016